



ONICO Medium and Large Trackhead for TECTON

DO NOT REMOVE THE LED ASSEMBLY. THIS WILL VOID THE WARRANTY. Call Zumtobel at 1-800-448-4131 for questions.

RISK OF FIRE AND ELECTRICAL SHOCK

Contact, improper installation, or improper servicing MAY RESULT IN DEATH OR SERIOUS INJURY! Fixture must be installed by a qualified electrician only. Fixture is intended for installation in accordance with the National Electrical Code, local and federal code specifications. Disconnect power at electrical panel before servicing. Retain these instructions for maintenance reference.

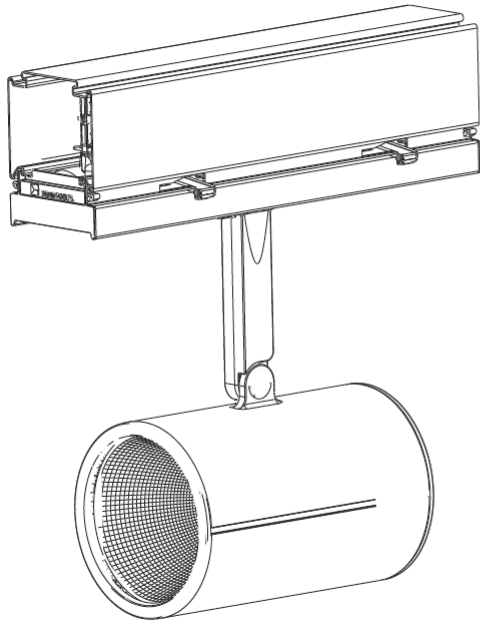
ADVERTENCIA: Riesgo de incendio o impacto eléctrico.

Conexión, instalación inapropiada o servicio incorrecto PUEDE CAUSAR MUERTE O HERIDAS GRAVES. La luminaria debe ser instalada únicamente por un eléctrico calificado. La luminaria debe instalarse de acuerdo al Norma eléctrica nacional, al igual que especificaciones locales y normas federales. Se debe desconectar la corriente eléctrica antes de realizar la mantención. Conservar estas instrucciones como referencia para futuras mantenciones.

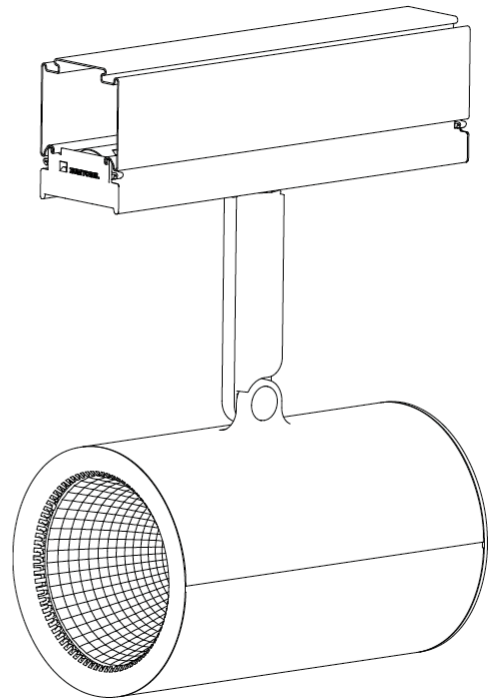
ATTENTION: RISQUE D'INCENDIE ET D'ELECTROCUTION.

Une installation, un entretien ou un contact physique non conforme pourraient mener à un DANGER DE MORT OU DE BLESSURE GRAVE! L'appareil doit être installé uniquement par un électricien professionnel qualifié. L'installation doit respecter le code électrique national de même que les lois locales et fédérales en vigueur. Veuillez fermer l'alimentation électrique au panneau principal avant tout entretien. Conserver ces instructions pour référence et tout entretien futur.

The following installation instructions relate to the options below:



Onico for TECTON, Medium

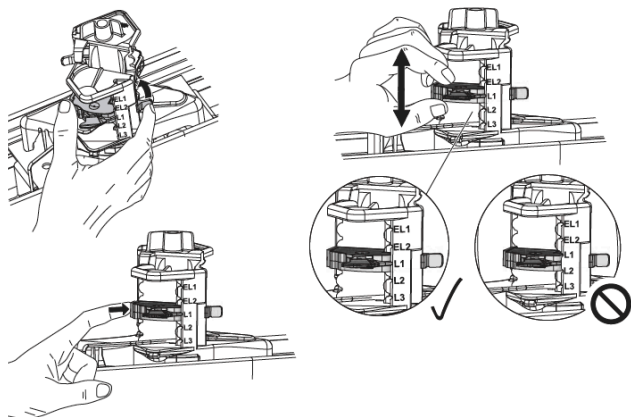


Onico for TECTON, Large

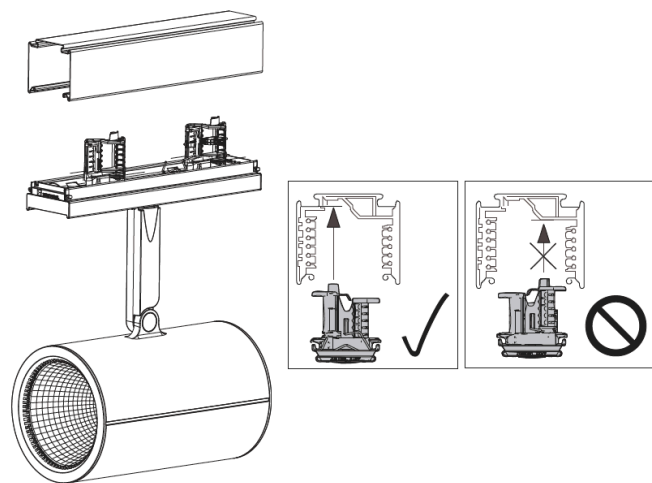
ONICO Medium and Large Trackhead for TECTON

DO NOT REMOVE THE LED ASSEMBLY. THIS WILL VOID THE WARRANTY. Call Zumtobel at 1-800-448-4131 for questions.

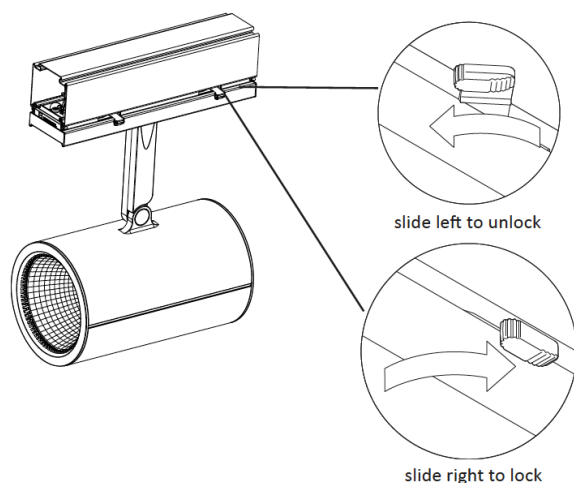
ONICO INSTALLATION FOR TECTON



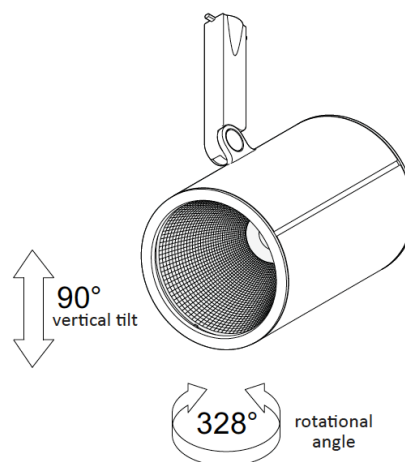
- 1 Remove** all covers from electrical adapters of trunking connector.
- 2 Move** the circuit leg choice to the desired position.



- 3 Link** adapter to TECTON trunking. Adapter will not link securely if placed in an incorrect orientation.



- 4 Ensure** locks are in their proper position. Sliding the locks to the right will secure fixture into place.

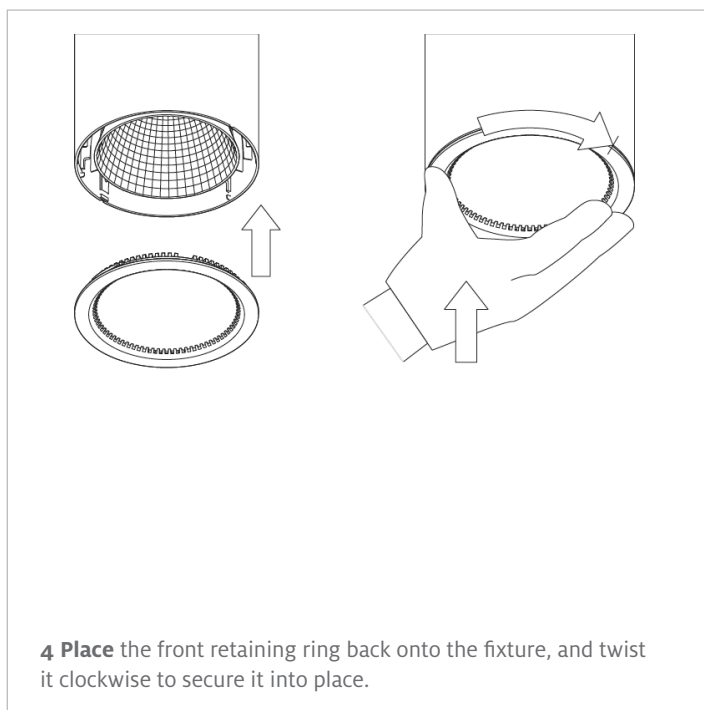
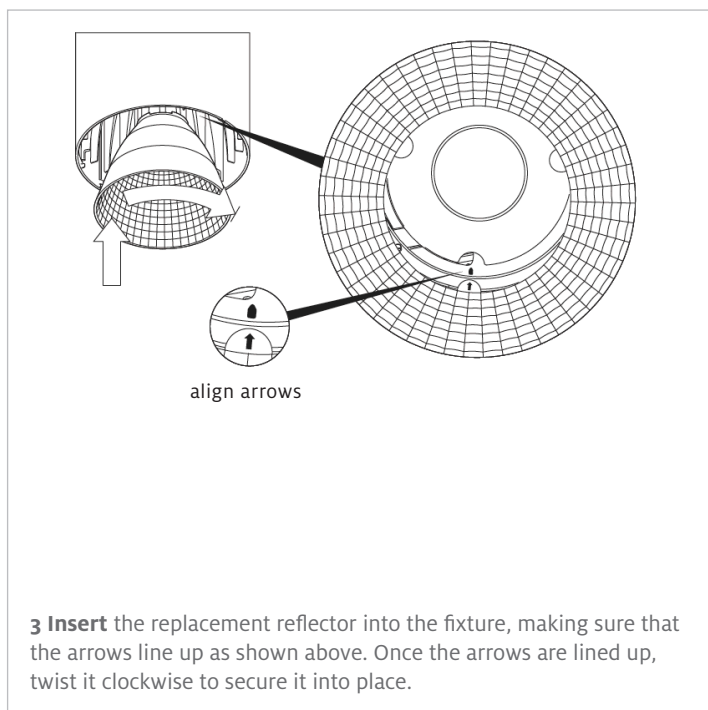
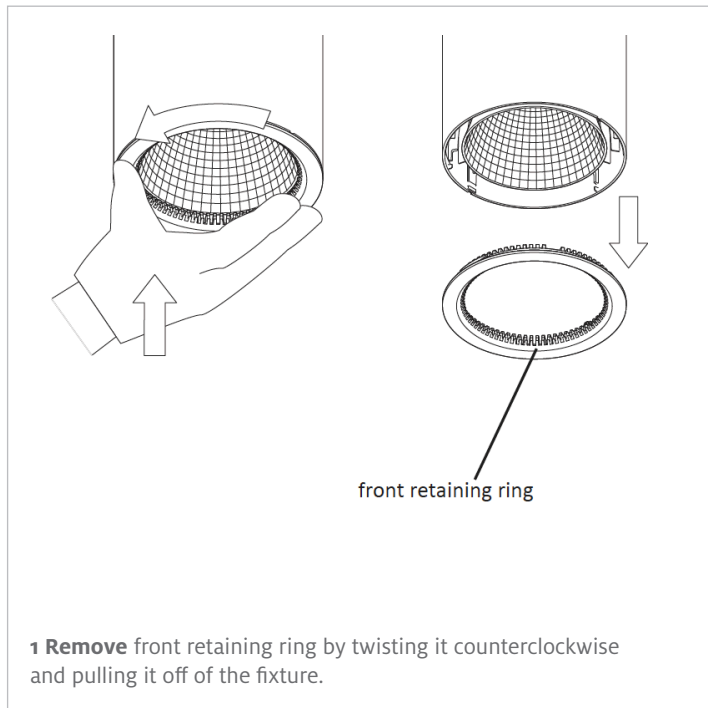


- 5 Tilting of fixture** Fixture head can be tilted up to 90°.
- 6 Rotating of fixture** Fixture arm can be rotated up to 328°.

ONICO Medium and Large Trackhead for TECTON

DO NOT REMOVE THE LED ASSEMBLY. THIS WILL VOID THE WARRANTY. Call Zumtobel at 1-800-448-4131 for questions.

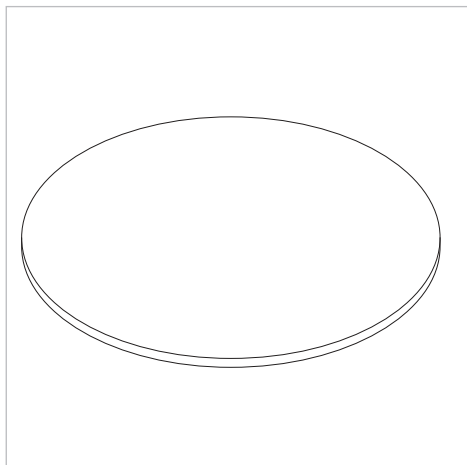
INTERCHANGEABLE REFLECTOR INSTALLATION



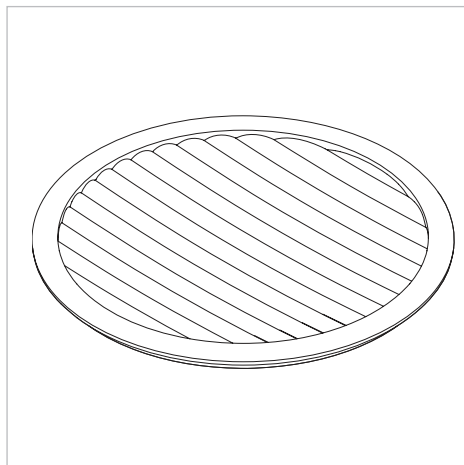
ONICO Medium and Large Trackhead for TECTON

DO NOT REMOVE THE LED ASSEMBLY. THIS WILL VOID THE WARRANTY. Call Zumtobel at 1-800-448-4131 for questions.

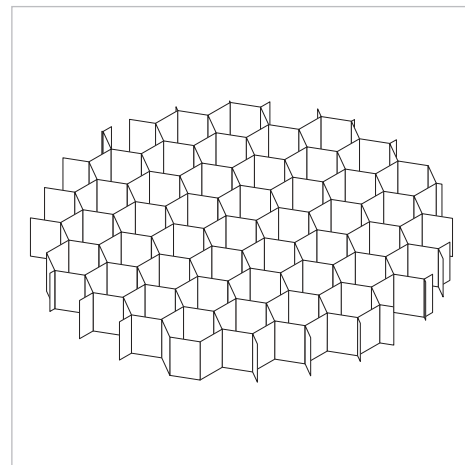
ACCESSORY INSTALLATION



soft outline lens

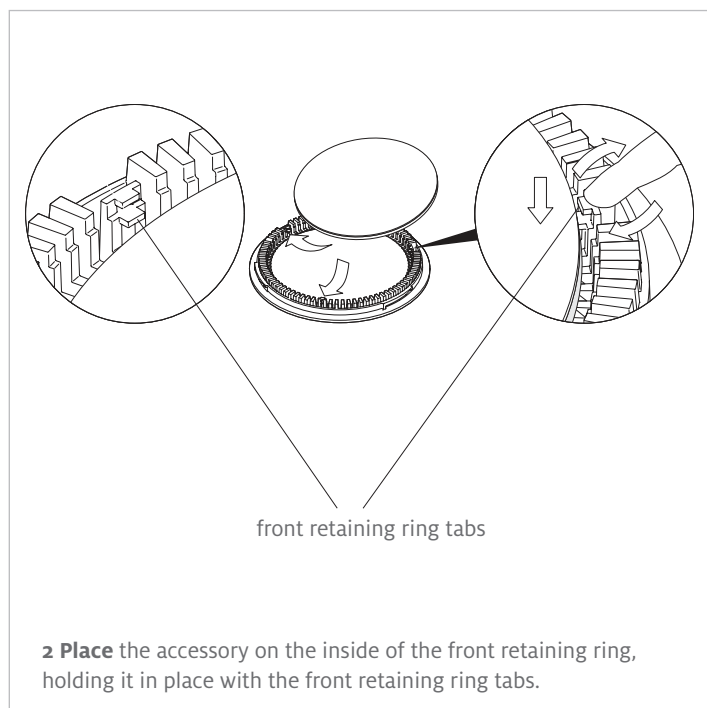
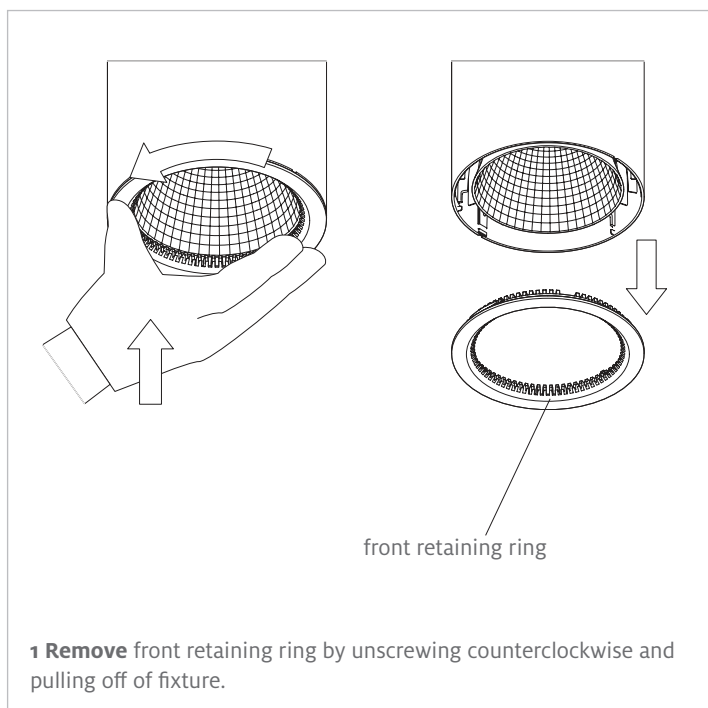


oval outline lens



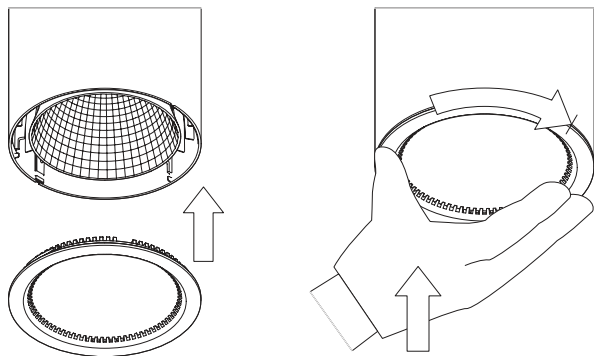
honeycomb louver

All lenses and louvers are available for both Medium and Large sized fixtures



ONICO Medium and Large Trackhead for TECTON

DO NOT REMOVE THE LED ASSEMBLY. THIS WILL VOID THE WARRANTY. Call Zumtobel at 1-800-448-4131 for questions.



3 Place the front retaining ring back onto the fixture, and screw clockwise to secure into place.