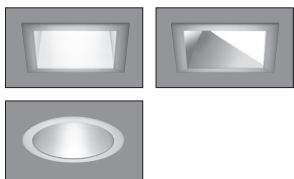


Installation Instructions



Important Preinstallation Note: Additional connections required inside splice compartment for operation. Mounting bars ordered separately.

NOTE: For square fixtures, this fixture is designed for ceiling thickness of 1 1/4" max. For round fixtures, this fixture is designed for ceiling thickness of 1 3/8" max. Bottom of throat must be flush with ceiling plane. Round wallwash not available.

4" BASYS LEDII Techzone Flanged Downlight and Wallwasher Square and Round

WHEN REPLACING PCB ASSEMBLIES, PLEASE WEAR AN ESD WRIST STRAP AND CONNECT IT TO THE METAL ENCLOSURE.



DANGER



RISK OF FIRE AND ELECTRICAL SHOCK

Contact, improper installation, or improper servicing MAY RESULT IN DEATH OR SERIOUS INJURY!

Fixture must be installed by a qualified electrician only. Fixture is intended for installation in accordance with the National Electrical Code, local and federal code specifications. Disconnect power at electrical panel before servicing. Retain these instructions for maintenance reference.

1 Unpack rough-in. Trim (reflector) and mounting bars are packaged separately. Do NOT remove trim from packing insert until ready for installation. Driver assembly is packaged with housing.

2 Cut opening in ceiling:

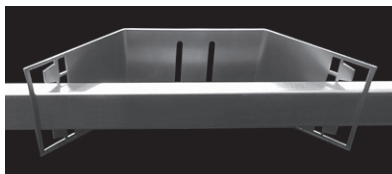


4 Inch Square Ceiling Cutout = 4 7/8" x 4 7/8"

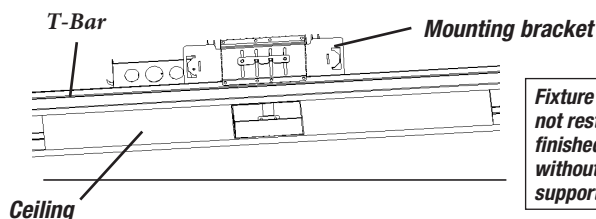
4 Inch Round Ceiling Cutout = 4 3/4" Dia.

3 (Optional)

Insert mounting bars by sliding into position through mounting brackets.



4 Install rough-in into ceiling. Secure to ceiling structure. Adjust mounting brackets so bottom of flange is flush with ceiling line. (1 5/16" ceiling thickness, max.)



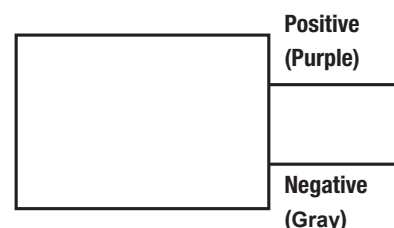
Fixture should not rest on finished ceiling without proper support.

5 Make electrical connections.

Ground rough-in using the green ground wire. Close splice compartment assembly cover.

For non-dimming installations, simply cap off the two control wires and connect the hot/neutral and ground as normal.

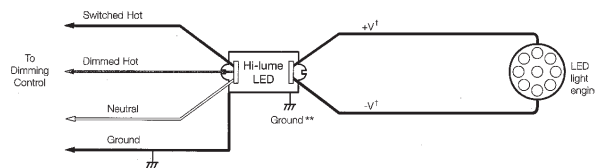
0-10V Wiring Diagram



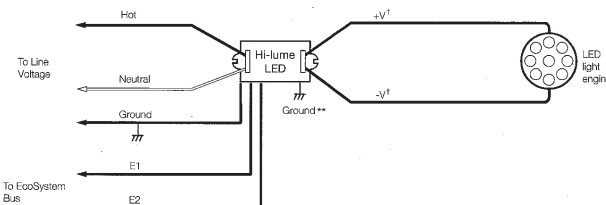
For 0-10V dimming applications. Connect the gray wire to negative. Connect the purple wire to positive. See example wiring diagram above.

LUTRON Hi-Lume Wiring Diagrams – Non-EM Installations

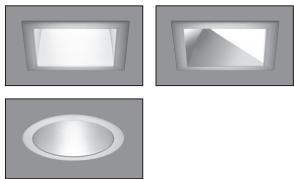
Wiring Diagram for 3-Wire Dimming



Wiring Diagram for EcoSystem® Digital Control



Installation Instructions



Important Preinstallation Note: Additional connections required inside splice compartment for operation. Mounting bars ordered separately.

4" BASYS LEDII Techzone Flanged Downlight and Wallwasher Square and Round

NOTE: For square fixtures, this fixture is designed for ceiling thickness of 1 1/4" max. For round fixtures, this fixture is designed for ceiling thickness of 1 3/8" max. Bottom of throat must be flush with ceiling plane. Round wallwash not available.

WHEN REPLACING PCB ASSEMBLIES, PLEASE WEAR AN ESD WRIST STRAP AND CONNECT IT TO THE METAL ENCLOSURE.



DANGER

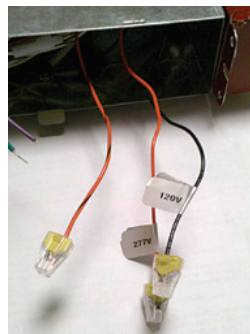


RISK OF FIRE AND ELECTRICAL SHOCK

Contact, improper installation, or improper servicing MAY RESULT IN DEATH OR SERIOUS INJURY!

Fixture must be installed by a qualified electrician only. Fixture is intended for installation in accordance with the National Electrical Code, local and federal code specifications. Disconnect power at electrical panel before servicing. Retain these instructions for maintenance reference.

For EM installations, set the voltage by connecting the appropriate wires:
120V – Black to Orange/Black
277V – Orange to Orange/Black



After AC power is connected to the fixture, connect the red & white wire (converter connection).

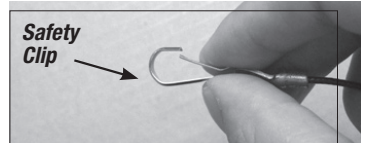


Close splice compartment assembly cover.

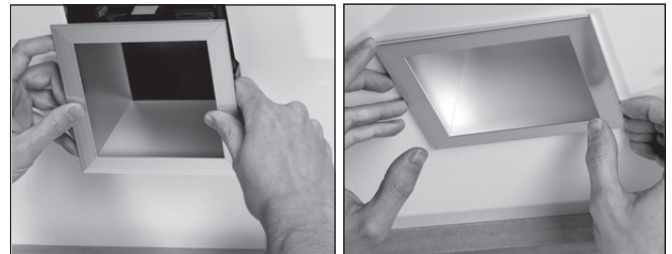
6

Secure upper trim onto lower trim while glass lens is securely in place on the lower trim.

7 Secure trim assembly to safety cable from inside the housing.



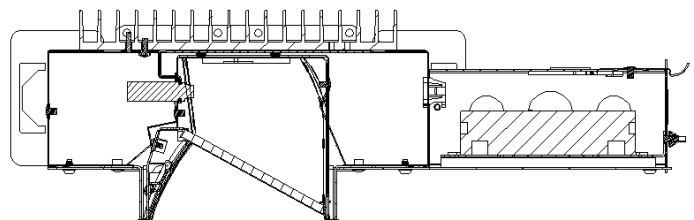
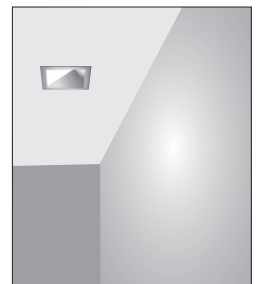
8 Insert reflector into housing and press upward firmly to engage the retaining springs.



9 Alignment of wallwashers.

Wallwash reflectors must be installed as shown below.

For EM WW fixtures, follow the affixed directional label for the WW trim, ensuring the test light appears through the slot in the trim.



NOTE: National or municipal codes must be followed regarding fixture installation and set back of thermal insulating material from luminaire. As a guideline, any insulation material must be held away from the luminaire by a minimum of 3". Fixtures are not designed for direct contact with thermal insulation.



Installation Instructions



Important Preinstallation Note: Additional connections required inside splice compartment for operation. Mounting bars ordered separately.

4" BASYS LEDII Techzone Flanged Downlight and Wallwasher Square and Round

NOTE: For square fixtures, this fixture is designed for ceiling thickness of 1 1/4" max. For round fixtures, this fixture is designed for ceiling thickness of 1 3/8" max. Bottom of throat must be flush with ceiling plane. Round wallwash not available.

WHEN REPLACING PCB ASSEMBLIES, PLEASE WEAR AN ESD WRIST STRAP AND CONNECT IT TO THE METAL ENCLOSURE.



DANGER



RISK OF FIRE AND ELECTRICAL SHOCK

Contact, improper installation, or improper servicing MAY RESULT IN DEATH OR SERIOUS INJURY!

Fixture must be installed by a qualified electrician only. Fixture is intended for installation in accordance with the National Electrical Code, local and federal code specifications. Disconnect power at electrical panel before servicing. Retain these instructions for maintenance reference.

Maintenance - Turn off power first!

1 Relamping. Contact Zumtobel at 1-800-448-4131 for replacement LED Module. Please provide the original fixture description per the label inside the fixture.

Once replacement LED module has been received, follow these steps.

- 1. Please wear clean cotton gloves** and electrostatic discharge protection. At the minimum, an ESD wrist strap should be worn and properly grounded.
- 2. Turn power off.**
- 3. Remove lower trim.** Pull out by grabbing the trim by the flange and pull down.
- The upper reflector has two mounting feet located at 180° apart which is held on to the housing cover by two 4-40x3/16" pan head, phillips #1 drive screws. You will need a screwdriver which has a blade length of 6" long. Remove the reflector screws and set them and the reflector aside. Be careful not to get fingerprints on reflector.
Note: Wallwash fixtures will not have an upper reflector.
- There is a wire harness coming from the LED board going to the power supply. The wire harness is connected to the board by a push in disconnect. Using a screw driver push down on lever and pull wire harness from LED board.
- 6. Remove the old LED board** by unscrewing the two 4-40x3/16" pan head, phillips #1 drive screws. You will need a screwdriver which has a blade length of 6" long.

Note: Wallwash fixtures you will have four screws to remove.

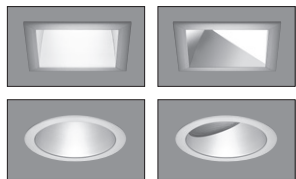
- 7. Using a scraper** (puddy knife), remove the old thermal film from casting and wipe clean with a clean cloth.
- 8. Remove transparent film protection** from both sides of the new thermal-film with your fingers.
- 9. Place the new thermal film** on bottom of new LED board.
- 10. Align the mounting holes** in LED board to the holes in the aluminum casted heatsink (i.e. housing cover).
- 11. Using the two** (or 4 for wallwash) 4-40x3/16" pan head, phillips #1 drive screws with the screwdriver which has a blade length of 6" long install the screws into two opposite holes on the LED board.
- 12. Take the wire harness** in the housing and push it onto the connector on the new LED board.
- 13. Take the upper reflector** and align it up with the two remaining holes on the LED board. Using the two 4-40x3/16" pan head, phillips #1 drive screws with the screwdriver which has a blade length of 6" long install the screws into the two remaining holes in LED board. Be careful not to get fingerprints on reflector.
- 14. Install lower trim.** Push up on the trim until the flange touches the ceiling.
- 15. Turn on the power.**
- 16. For disposal,** please send the old LED module back to Zumtobel using the ESD bag provided.

2 Cleaning. Wipe with soft lint-free cloth.
Do not use glass cleaner or other solvents.

3 Access to Driver.
Remove lower reflector. Driver is accessible through housing aperture. Then unscrew the 4 screws holding the upper reflector and remove, being careful not to get fingerprints on the reflector. Remove the inside junction box cover. The driver is mounted on inside junction box cover.



Installation Instructions



Important Preinstallation Note: Additional connections required inside splice compartment for operation. Mounting bars ordered separately.

NOTE: For square fixtures, this fixture is designed for ceiling thickness of 1 1/4" max. For round fixtures, this fixture is designed for ceiling thickness of 1 3/8" max. Bottom of throat must be flush with ceiling plane.

4" and 6" BASYS LED II Flanged Downlight and Wallwasher Square and Round

WHEN REPLACING PCB ASSEMBLIES, PLEASE WEAR AN ESD WRIST STRAP AND CONNECT IT TO THE METAL ENCLOSURE.



DANGER



RISK OF FIRE AND ELECTRICAL SHOCK

Contact, improper installation, or improper servicing MAY RESULT IN DEATH OR SERIOUS INJURY!

Fixture must be installed by a qualified electrician only. Fixture is intended for installation in accordance with the National Electrical Code, local and federal code specifications. Disconnect power at electrical panel before servicing. Retain these instructions for maintenance reference.

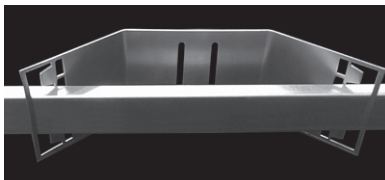
1 Unpack rough-in. Trim (reflector) and mounting brackets are packaged separately. Do NOT remove trim from packing insert until ready for installation. Ballast assembly is packaged with housing.

2 Cut opening in ceiling:

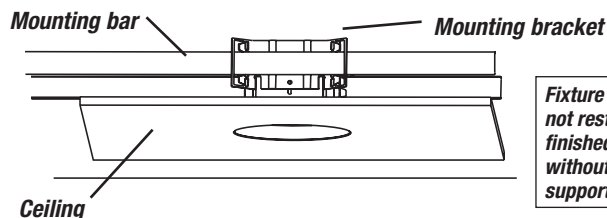


- 4 inch Square Ceiling Cutout = 5 1/4" x 5 1/4"
- 6 inch Square Ceiling Cutout = 6 7/8" x 6 7/8"
- 4 inch Round Ceiling Cutout = 5 1/4" Dia.
- 6 inch Round Ceiling Cutout = 6 7/8" Dia.

3 Insert mounting brackets into fixture and insert mounting bars by sliding into position through mounting brackets.



4 Install rough-in into ceiling. Secure to ceiling structure. Adjust mounting brackets so bottom of flange is flush with ceiling line. (1 5/16" ceiling thickness, max.)



Fixture should not rest on finished ceiling without proper support.

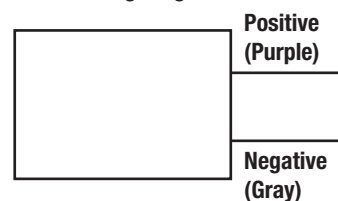
For 6" fixtures: Do not install fuse until after AC power is connected to the fixture. Failure to do so will blow the fuse and may damage the LED driver.

5 Make electrical connections.

Ground rough-in using the green ground wire. Close splice compartment assembly cover.

For non-dimming installations, simply cap off the two control wires and connect the hot/neutral and ground as normal.

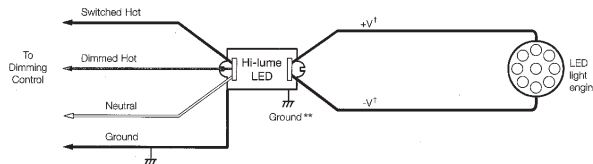
0-10V Wiring Diagram



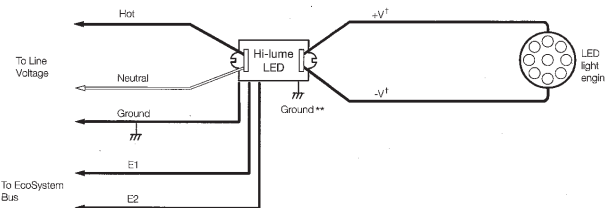
For 0-10V dimming applications. Connect the gray wire to negative. Connect the purple wire to positive. See example wiring diagram above.

LUTRON Hi-Lume Wiring Diagrams – Non-EM Installations

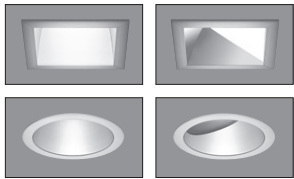
Wiring Diagram for 3-Wire Dimming



Wiring Diagram for EcoSystem® Digital Control



Installation Instructions



Important Preinstallation Note: Additional connections required inside splice compartment for operation. Mounting bars ordered separately.

NOTE: For square fixtures, this fixture is designed for ceiling thickness of 1 1/4" max. For round fixtures, this fixture is designed for ceiling thickness of 1 3/8" max. Bottom of throat must be flush with ceiling plane.

4" and 6" BASYS LED II Flanged Downlight and Wallwasher Square and Round

WHEN REPLACING PCB ASSEMBLIES, PLEASE WEAR AN ESD WRIST STRAP AND CONNECT IT TO THE METAL ENCLOSURE.



DANGER

RISK OF FIRE AND ELECTRICAL SHOCK

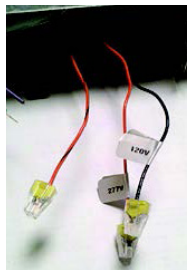
Contact, improper installation, or improper servicing MAY RESULT IN DEATH OR SERIOUS INJURY!

Fixture must be installed by a qualified electrician only. Fixture is intended for installation in accordance with the National Electrical Code, local and federal code specifications. Disconnect power at electrical panel before servicing. Retain these instructions for maintenance reference.



For 4" and 6" EM installations, set the voltage by connecting the appropriate wires:
120V – Black to Orange/Black
277V – Orange to Orange/Black

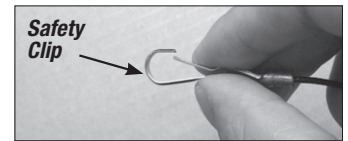
For 6" EMH installations, the voltage is set at the factory. After AC power is connected to the fixture, connect the red & white wire (converter connection).



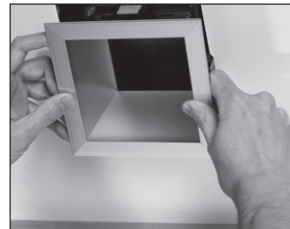
Close splice compartment assembly cover.

6 Secure upper trim onto lower trim while glass lens is securely in place on the lower trim.

7 Secure trim assembly to safety cable from inside the housing.

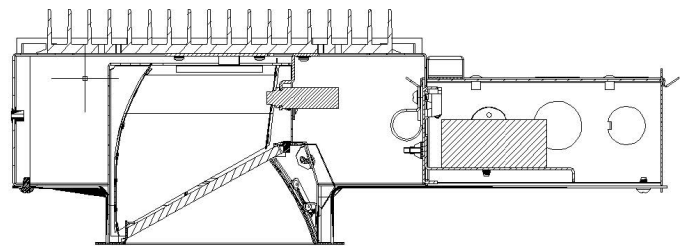
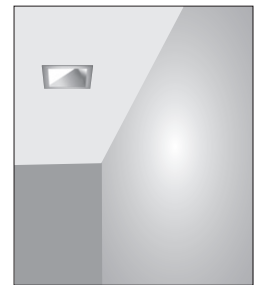


8 Insert reflector into housing and press upward firmly to engage the retaining springs.



9 Alignment of wallwashers. Wallwash reflectors must be installed as shown below.

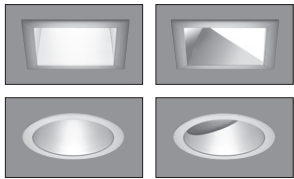
For EM WW fixtures, follow the affixed directional label for the WW trim, ensuring the test light appears through the slot in the trim.



NOTE: National or municipal codes must be followed regarding fixture installation and set back of thermal insulating material from luminaire. As a guideline, any insulation material must be held away from the luminaire by a minimum of 3". Fixtures are not designed for direct contact with thermal insulation.



Installation Instructions



Important Preinstallation Note: Additional connections required inside splice compartment for operation. Mounting bars ordered separately.

NOTE: For square fixtures, this fixture is designed for ceiling thickness of 1 1/4" max. For round fixtures, this fixture is designed for ceiling thickness of 1 3/8" max. Bottom of throat must be flush with ceiling plane.

4" and 6" BASYS LED II Flanged Downlight and Wallwasher Square and Round

WHEN REPLACING PCB ASSEMBLIES, PLEASE WEAR AN ESD WRIST STRAP AND CONNECT IT TO THE METAL ENCLOSURE.



DANGER

RISK OF FIRE AND ELECTRICAL SHOCK

Contact, improper installation, or improper servicing MAY RESULT IN DEATH OR SERIOUS INJURY!

Fixture must be installed by a qualified electrician only. Fixture is intended for installation in accordance with the National Electrical Code, local and federal code specifications. Disconnect power at electrical panel before servicing. Retain these instructions for maintenance reference.



Maintenance - Turn off power first!

1 Relamping. Contact Zumtobel at 1-800-448-4131 for replacement LED Module. Please provide the original fixture description per the label inside the fixture.

Once replacement LED module has been received, follow these steps.

- 1. Please wear clean cotton gloves** and electrostatic discharge protection. At the minimum, an ESD wrist strap should be worn and properly grounded.
- 2. Turn power off.**
- 3. Remove lower trim.** Pull out by grabbing the trim by the flange and pull down.
- The upper reflector has two mounting feet located at 180° apart which is held on to the housing cover by two 4-40x3/16" pan head, phillips #1 drive screws. You will need a screwdriver which has a blade length of 6" long. Remove the reflector screws and set them and the reflector aside. Be careful not to get fingerprints on reflector.
Note: Wallwash fixtures will not have an upper reflector.
- There is a wire harness coming from the LED board going to the power supply. The wire harness is connected to the board by a push in disconnect. Using a screw driver push-down on lever and pull wire harness from LED board.
- 6. Remove the old LED board** by unscrewing the two 4-40x3/16" pan head, phillips #1 drive screws. You will need a screwdriver which has a blade length of 6" long.

Note: Wallwash fixtures you will have four screws to remove.

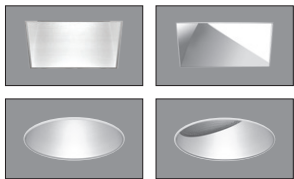
- 7. Using a scraper** (putty knife), remove the old thermal film from casting and wipe clean with a clean cloth.
- 8. Remove transparent film protection** from both sides of the new thermal-film with your fingers.
- 9. Place the new thermal film** on bottom of new LED board.
- 10. Align the mounting holes** in LED board to the holes in the aluminum casted heatsink (i.e. housing cover).
- 11. Using the two** (or 4 for wallwash) 4-40x3/16" pan head, phillips #1 drive screws with the screwdriver which has a blade length of 6" long install the screws into two opposite holes on the LED board.
- 12. Take the wire harness** in the housing and push it onto the connector on the new LED board.
- 13. Take the upper reflector** and align it up with the two remaining holes on the LED board. Using the two 4-40x3/16" pan head, phillips #1 drive screws with the screwdriver which has a blade length of 6" long install the screws into the two remaining holes in LED board. Be careful not to get fingerprints on reflector.
- 14. Install lower trim.** Push up on the trim until the flange touches the ceiling.
- 15. Turn on the power.**
- 16. For disposal,** please send the old LED module back to Zumtobel using the ESD bag provided.

2 Cleaning. Wipe with soft lint-free cloth. Do not use glass cleaner or other solvents.

3 Access to Driver. Remove lower reflector. Ballast is accessible through housing aperture. Then unscrew the 4 screws holding the upper reflector and remove, being careful not to get fingerprints on the reflector. Remove the inside junction box cover. The driver is mounted on inside junction box cover.



Installation Instructions



Important Preinstallation Note: Additional connections required inside splice compartment for operation. Mounting bars ordered separately.

NOTE: This fixture is designed for ceiling thickness of 1 1/2" max. Bottom of throat must be flush with ceiling plane.

4" and 6" BASYS LED II Flangeless Downlight and Wallwasher Square and Round

WHEN REPLACING PCB ASSEMBLIES, PLEASE WEAR AN ESD WRIST STRAP AND CONNECT IT TO THE METAL ENCLOSURE.



DANGER

RISK OF FIRE AND ELECTRICAL SHOCK

Contact, improper installation, or improper servicing MAY RESULT IN DEATH OR SERIOUS INJURY!

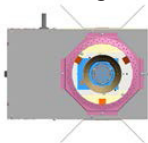
Fixture must be installed by a qualified electrician only. Fixture is intended for installation in accordance with the National Electrical Code, local and federal code specifications. Disconnect power at electrical panel before servicing. Retain these instructions for maintenance reference.



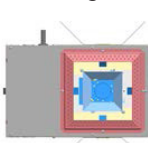
1 Unpack rough-in. Trim (reflector) and mounting brackets are packaged separately. Do NOT remove trim from packing insert until ready for installation. Ballast assembly is packaged with housing.

2 Cut opening in ceiling:

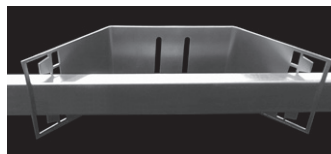
4" Round: octagon ceiling cutout 6 11/16" across flats.
6" Round: octagon ceiling cutout 8 1/4" across flats.



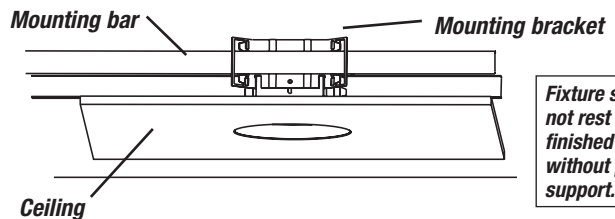
4" Square: ceiling cutout 6 11/16" across flats.
6" Round: octagon ceiling cutout 8 1/4" across flats.



3 Insert mounting brackets into fixture by inserting lock brackets through the mounting brackets and into housing, then secure it with provided wing nuts. Note the wing nuts must be inside the housing to enable adjustment of installed fixture. Slide mounting bars into position through mounting brackets.



4 Install rough-in into ceiling. Secure to ceiling structure. Adjust mounting brackets so bottom of flange is flush with ceiling line. For optimum lighting performance, sheetrock must be even with outer plastic flange. Make sure fixture is level on all four sides, adjust screws if necessary.



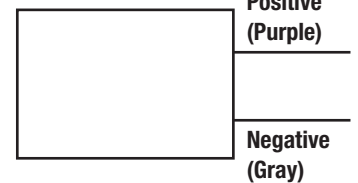
Fixture should not rest on finished ceiling without proper support.

For 6" fixtures: Do not install fuse until after AC power is connected to the fixture. Failure to do so will blow the fuse and may damage the LED driver.

5 Make electrical connections. Ground rough-in using the green ground wire. Close splice compartment assembly cover.

For non-dimming installations, simply cap off the two control wires and connect the hot/neutral and ground as normal.

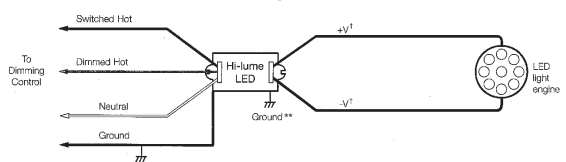
0-10V Wiring Diagram



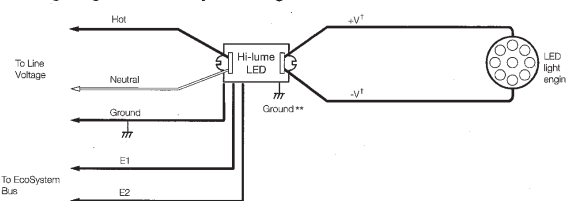
For 0-10V dimming applications. Connect the gray wire to negative. Connect the purple wire to positive. See example wiring diagram above.

LUTRON Hi-Lume Wiring Diagrams – Non-EM Installations

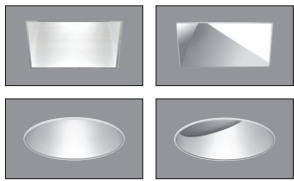
Wiring Diagram for 3-Wire Dimming



Wiring Diagram for EcoSystem® Digital Control



Installation Instructions



Important Preinstallation Note: Additional connections required inside splice compartment for operation. Mounting bars ordered separately.

NOTE: This fixture is designed for ceiling thickness of 1 1/2" max. Bottom of throat must be flush with ceiling plane.

4" and 6" BASYS LED II Flangeless Downlight and Wallwasher Square and Round

WHEN REPLACING PCB ASSEMBLIES, PLEASE WEAR AN ESD WRIST STRAP AND CONNECT IT TO THE METAL ENCLOSURE.



DANGER

RISK OF FIRE AND ELECTRICAL SHOCK

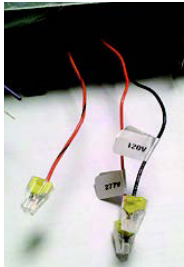
Contact, improper installation, or improper servicing MAY RESULT IN DEATH OR SERIOUS INJURY!

Fixture must be installed by a qualified electrician only. Fixture is intended for installation in accordance with the National Electrical Code, local and federal code specifications. Disconnect power at electrical panel before servicing. Retain these instructions for maintenance reference.



For 4" and 6" EM installations

(Philips Bodine BSL26C), set the voltage by connecting the appropriate wires:
120V – Black to Orange/Black
277V – Orange to Orange/Black



For 6" EMH Installations

(Philips Bodine BSL722), the voltage is set at the factory.

After AC power is connected to the fixture, connect the red & white wires (converter connection).



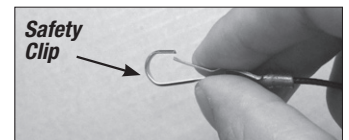
Close splice compartment assembly cover.

To access the EM pack on 55° cutoff fixtures:

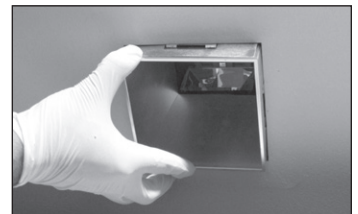
1. Remove two heat sink mounting screws (indicated by labels with arrows pointing to screws). and set aside.
2. Push heat sink up into the ceiling plenum and set aside.
3. Once heat sink is removed, angle the unit through the hole in the top of the housing, turn it vertical and pull it straight down through the fixture aperture.
4. To reinstall EM pack follow step 3 in reverse order.
5. Reinstall heat sink and secure with screws.

6 Once fixture is in ceiling, apply fiberglass mesh tape or equivalent (by others) and use joint compound to fill in gaps. When joint compound dries, sand down to make even with flange. Interior of mud ring must be free of drywall compound, paint or any other foreign matter. Clearance to the lower reflector assembly is tight and the presence of foreign matter will not allow proper installation.

7 Secure trim assembly to safety cable from inside the housing.

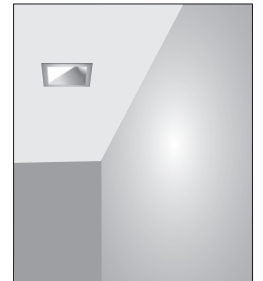


8 Insert reflector into housing and press upward firmly to engage the retaining springs.



9 Alignment of wallwashers. Wallwash reflectors must be installed as shown below.

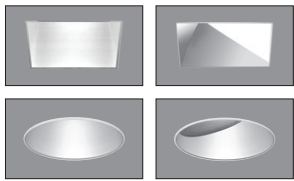
For EM WW fixtures, follow the affixed directional label for the WW trim, ensuring the test light appears through the slot in the trim.



NOTE: National or municipal codes must be followed during the fixture installation. Fixtures are not designed for direct contact with thermal insulation. As a guideline, any insulation material must be held away from the luminaire by a minimum of 3".



Installation Instructions



Important Preinstallation Note: Additional connections required inside splice compartment for operation. Mounting bars ordered separately.

NOTE: This fixture is designed for ceiling thickness of 1 1/2" max. Bottom of throat must be flush with ceiling plane.

4" and 6" BASYS LED II Flangeless Downlight and Wallwasher Square and Round

WHEN REPLACING PCB ASSEMBLIES, PLEASE WEAR AN ESD WRIST STRAP AND CONNECT IT TO THE METAL ENCLOSURE.



DANGER

RISK OF FIRE AND ELECTRICAL SHOCK

Contact, improper installation, or improper servicing MAY RESULT IN DEATH OR SERIOUS INJURY!

Fixture must be installed by a qualified electrician only. Fixture is intended for installation in accordance with the National Electrical Code, local and federal code specifications. Disconnect power at electrical panel before servicing. Retain these instructions for maintenance reference.



Maintenance - Turn off power first!

1 Relamping. Contact Zumtobel at 1-800-448-4131 for replacement LED Module. Please provide the original fixture description per the label inside the fixture.

Once replacement LED module has been received, follow these steps.

- 1. Please wear clean cotton gloves** and electrostatic discharge protection. At the minimum, an ESD wrist strap should be worn and properly grounded.
- 2. Turn power off.**
- 3. Remove lower trim.** Pull out by grabbing the trim by the flange and pull down.
- 4.** The upper reflector has two mounting feet located at 180° apart which is held on to the housing cover by two 4-40x3/16" pan head, phillips #1 drive screws. You will need a screwdriver which has a blade length of 6" long. Remove the reflector screws and set them and the reflector aside. Be careful not to get fingerprints on reflector.
Note: Wallwash fixtures will not have an upper reflector.
- 5.** There is a wire harness coming from the LED board going to the power supply. The wire harness is connected to the board by a push in disconnect. Using a screw driver push-down on lever and pull wire harness from LED board.
- 6. Remove the old LED board** by unscrewing the two 4-40x3/16" pan head, phillips #1 drive screws. You will need a screwdriver which has a blade length of 6" long.

Note: Wallwash fixtures you will have four screws to remove.

- 7. Using a scraper** (putty knife), remove the old thermal film from casting and wipe clean with a clean cloth.
- 8. Remove transparent film protection** from both sides of the new thermal-film with your fingers.
- 9. Place the new thermal film** on bottom of new LED board.
- 10. Align the mounting holes** in LED board to the holes in the aluminum casted heatsink (i.e. housing cover).
- 11. Using the two** (or 4 for wallwash) 4-40x3/16" pan head, phillips #1 drive screws with the screwdriver which has a blade length of 6" long install the screws into two opposite holes on the LED board.
- 12. Take the wire harness** in the housing and push it onto the connector on the new LED board.
- 13. Take the upper reflector** and align it up with the two remaining holes on the LED board. Using the two 4-40x3/16" pan head, phillips #1 drive screws with the screwdriver which has a blade length of 6" long install the screws into the two remaining holes in LED board. Be careful not to get fingerprints on reflector.
- 14. Install lower trim.** Push up on the trim until the flange touches the ceiling.
- 15. Turn on the power.**
- 16. For disposal,** please send the old LED module back to Zumtobel using the ESD bag provided.

2 Cleaning. Wipe with soft lint-free cloth. Do not use glass cleaner or other solvents.

3 Access to Driver. Remove lower reflector. Ballast is accessible through housing aperture. Then unscrew the 4 screws holding the upper reflector and remove, being careful not to get fingerprints on the reflector. Remove the inside junction box cover. The driver is mounted on inside junction box cover.

