

Installation Instructions



Important Preinstallation Note: Additional connections required inside splice compartment for operation. Mounting bars ordered separately.

NOTE: This fixture is designed for ceiling thickness of 1" max. Bottom of throat must be flush with ceiling plane.

**CARDAN LED
Recessed
6" x 6" Square
and 6" Round**

WHEN REPLACING PCB ASSEMBLIES, PLEASE WEAR AN ESD WRIST STRAP AND CONNECT IT TO THE METAL ENCLOSURE.

DANGER

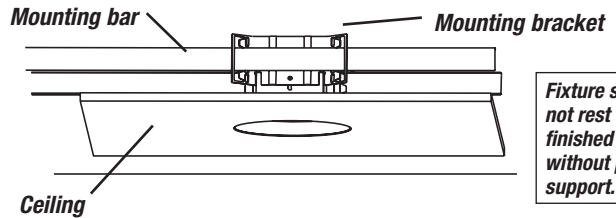
RISK OF FIRE AND ELECTRICAL SHOCK

Contact, improper installation, or improper servicing **MAY RESULT IN DEATH OR SERIOUS INJURY!**

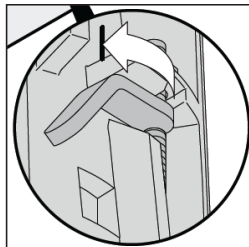
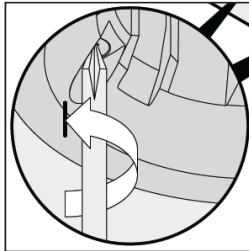
Fixture must be installed by a qualified electrician only. Fixture is intended for installation in accordance with the National Electrical Code, local and federal code specifications. Disconnect power at electrical panel before servicing. Retain these instructions for maintenance reference.



4 Install rough-in into ceiling. Secure to ceiling structure. Adjust mounting brackets so bottom of flange is flush with ceiling line. (1" ceiling thickness, max.)



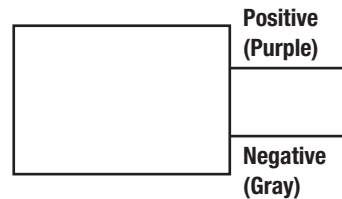
1 Unpack fixture. Fixture is packed and shipped for assembly. Remove LED assembly from trim by loosening retention screws. Once retention screws are loosened, the pivoting lock mechanisms will swing free, allowing the LED assembly to fall free from the trim. When assembly is clear of trim opening, unattach the quick disconnect from the driver box and safety cable from the trim.



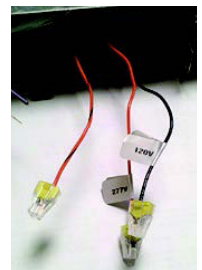
5 Make electrical connections. Ground rough-in using the green ground wire. Close splice compartment assembly cover.

For non-dimming installations, simply cap off the two control wires and connect the hot/neutral and ground as normal.

0-10V Wiring Diagram



For 0-10V dimming applications. Connect the gray wire to negative. Connect the purple wire to positive. See example wiring diagram above.



For 6" EM installations, the voltage is set at the factory. After AC power is connected to the fixture, connect the red & white wire (converter connection).

Close splice compartment assembly cover.

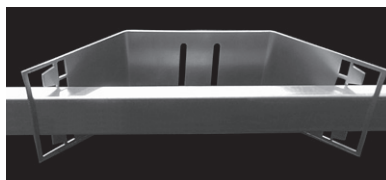


2 Cut opening in ceiling:



6 inch Square Ceiling Cutout = 7 1/8" x 7 1/8"
6 inch Round Ceiling Cutout = 7 1/8" Dia.

3 Insert mounting brackets into fixture and insert mounting bars by sliding into position through mounting brackets.



Installation Instructions



Important Preinstallation Note: Additional connections required inside splice compartment for operation. Mounting bars ordered separately.

NOTE: This fixture is designed for ceiling thickness of 1" max. Bottom of throat must be flush with ceiling plane.

CARDAN LED
Recessed
6" x 6" Square
and 6" Round

WHEN REPLACING PCB ASSEMBLIES, PLEASE WEAR AN ESD WRIST STRAP AND CONNECT IT TO THE METAL ENCLOSURE.



DANGER

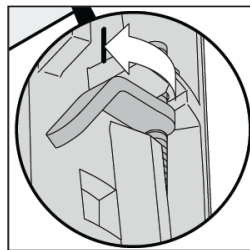
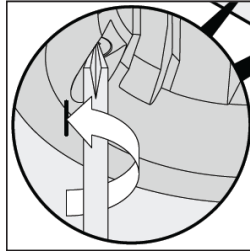


RISK OF FIRE AND ELECTRICAL SHOCK

Contact, improper installation, or improper servicing MAY RESULT IN DEATH OR SERIOUS INJURY!

Fixture must be installed by a qualified electrician only. Fixture is intended for installation in accordance with the National Electrical Code, local and federal code specifications. Disconnect power at electrical panel before servicing. Retain these instructions for maintenance reference.

6 Re-Install LED Assembly. First, reattach safety cable and connect quick disconnect, in similar manner as removal. Then, re-install trim by inserting assembly back into housing, and tightening the retention screws. If positioning is correct, once retention screws are snug, pivot lock mechanisms will be engaged and supporting the weight of the LED assembly.



Maintenance -

- 1) Turn off power first!
- 2) Contact Zumtobel at (800) 448-4131

To replace LED boards:

- 1) Zumtobel offers kits to replace the LED boards. Contact Zumtobel.
- 2) Be sure to wear ESD protection!

To replace driver:

- 1) Contact Zumtobel for authorization.
- 2) Be sure to wear ESD protection!

WHEN REPLACING PCB ASSEMBLIES, PLEASE WEAR AN ESD WRIST STRAP AND CONNECT IT TO THE METAL ENCLOSURE.

NOTE: National or municipal codes must be followed regarding fixture installation and set back of thermal insulating material from luminaire. As a guideline, any insulation material must be held away from the luminaire by a minimum of 3". Fixtures are not designed for direct contact with thermal insulation.