

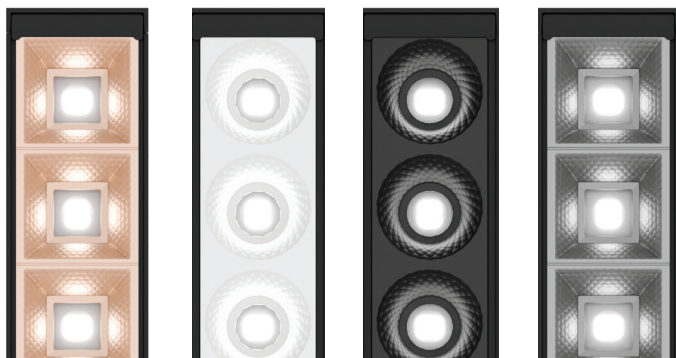
LINEAR DOWNLIGHT ARRAY

A minimalist form with limitless possibilities. The miniature multiple-cell linear downlight offers 1.5-inch micro-faceted shades in round or square shapes, with a choice of standard finishes and custom colors.

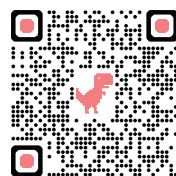
Configure both mini light optic cells, opal lenses and blanks freely, designing the luminaire's length to fit any space. A discrete and versatile solution for tailored lighting applications.

Uniquely LDA

- Buy America Act compliant – our products are manufactured in Highland NY and union made, IBEW Local 363
- One cell increments – specify your 24" luminaire with as few as one mini-optic
- Faceted shade creates soft beam appearance
- Deep cell shielding for 60 deg cut off angle
- 93 + CRI for direct optics
- Declare – transparency, all LDA materials disclosed
- Circular economy design – reducing environmental footprint with maintainable, reusable, re-manufacturable, and recyclable parts



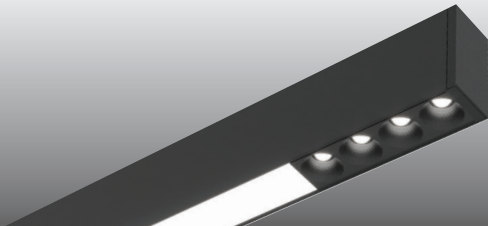
Learn More



Declare.



ZUMTOBEL



Dimensions: 1.84" X 3.51"

Mounting: Pendant, Surface, Wall, Recessed

Ceiling cut-out: 2" wide x length of luminaire

Color Rendering: CRI > 90, R9 > 50

Color Temperature: 2700 K, 3000 K, 3500 K, 4000 K

Luminous Flux: **Direct:** 250 lm/ft - 1000 lm/ft
Indirect: 250 lm/ft - 1000 lm/ft

Beam spread: **Direct:** Flood 29°, Wide Flood 50°, Very Wide Flood 75°
Indirect: Batwing, Lambertian, Asymmetric

Accessories: EM Battery, EM Circuit, Dual Switching (direct/indirect)

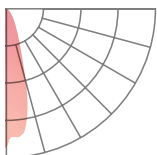
Control: **Driver Dimming:** 0 - 10 V, DALI, Lutron Ecosystem
Integrated IoT sensors: Casambi, Athena Wireless Node (RF or Sensor)

Housing Color: White, Black, Silver, Custom

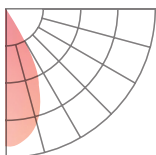
Mini Optic Color: Matte White, Matte Black, Satin Silver, Rose Gold, Copper, Gold, Custom

Direct Micro Optics: UGR < 5 with Black Shielding, UGR < 15 with White Shielding

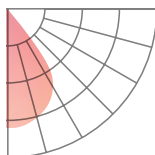
FLOOD
29° MINI OPTIC
90 CRI | 3000 K



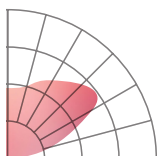
WIDE FLOOD
50° MINI OPTIC
90 CRI | 3000 K



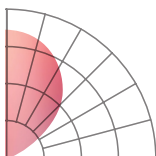
VERY WIDE FLOOD
75° MINI OPTIC
90 CRI | 3000 K



Indirect Optics



BATWING OPTIC
90 CRI | 3000 K



OVAL OPTIC
90 CRI | 3000 K



ASYMMETRIC OPTIC
90 CRI | 3000 K