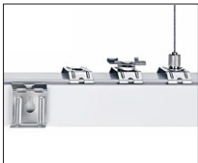


Installation Instructions – INDIVIDUAL & CONTINUOUS



Important Preinstallation Note: 4" square welded junction box (30 cu. in. volume) supplied by others. Canopies and suspensions are ordered separately. **Junction boxes should be installed regressed 3/16" into sheetrock ceiling.** For T-bar ceilings use caddy clips by others. Please refer to the approved layout drawings prior to installation, if applicable.

TECTON TRUNKING
for
TECTON SYSTEM

DO NOT REMOVE THE LED ASSEMBLY. THIS WILL VOID THE WARRANTY. Call Zumtobel at 1-800-448-4131 for questions.



DANGER

RISK OF FIRE AND ELECTRICAL SHOCK



Contact, improper installation, or improper servicing MAY RESULT IN DEATH OR SERIOUS INJURY!

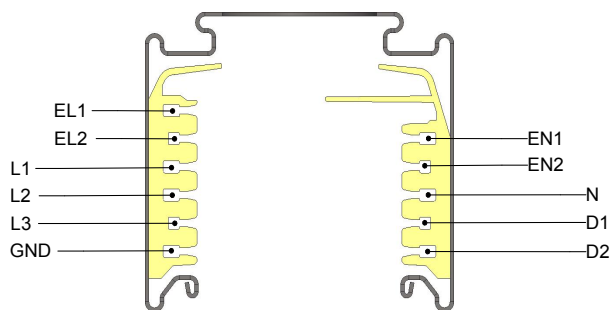
Fixture must be installed by a qualified electrician only. Fixture is intended for installation in accordance with the National Electrical Code, local and federal code specifications. Disconnect power at electrical panel before servicing. Retain these instructions for maintenance reference.

READ ENTIRE INSTRUCTIONS BEFORE STARTING INSTALLATION

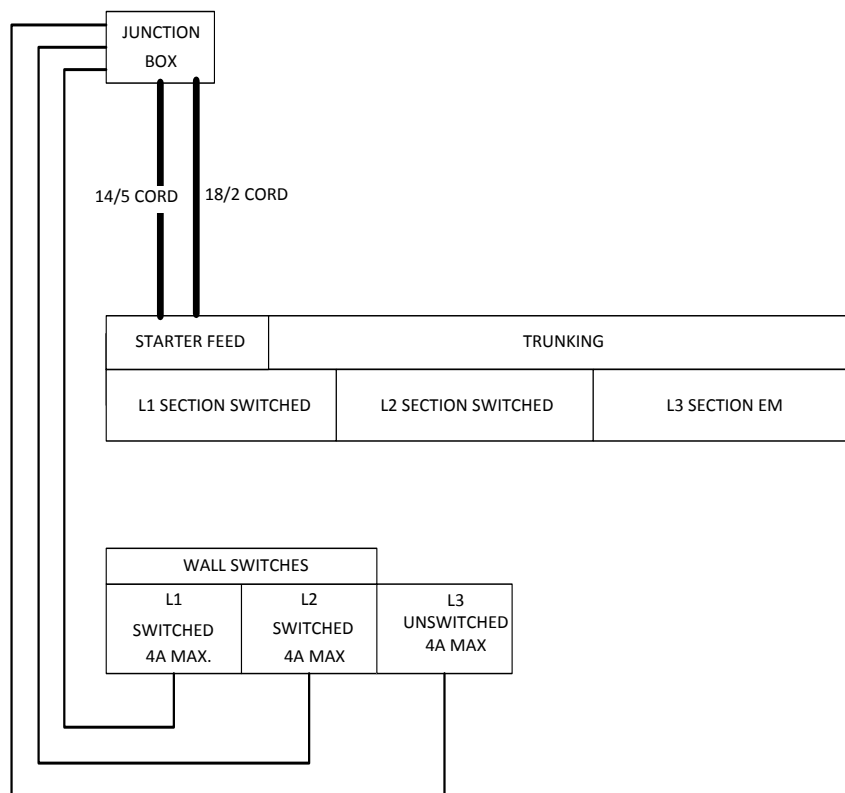
1 Unpack fixture. Suspensions/canopies are ordered and packaged separately.

2 Determine spacing for mounting points. The supplied Starter Feed contains pre-wired (5) 14-gauge SJT cord. For dimming applications additional (2) 18-gauge SJT cord is supplied. 15A max. rated, in single circuit with three switch legs. **It is not intended for use with three phase installation wiring conditions.**

The unused (2) conductors EL1 and EL2 are terminated (along with the line voltage conductors) at the end of the run.



EL1	NOT USED	EN1	LOW VOLTAGE
EL2	NOT USED	EN2	LOW VOLTAGE
L1	SWITCHED HOT	N	NEUTRAL
L2	SWITCHED HOT	D1	DIMMING
L3	UNSWITCHED HOT EM	D2	DIMMING
GND	GROUND		



* EN1 and EN2 cannot be wired externally, power is sourced from batten.

NOTE: CONSULT WITH FACTORY FOR USE
ADDITIONAL SWITCHED CIRCUIT

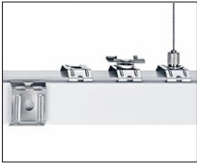
Zumtobel Lighting, Inc. ©2015
3300 Route 9W
Highland, NY 12528-2630
845-691-6262 • 800-448-4131 • zli.us@zumtobel.com
Part # D00471CI Date 05/02/24 **Page 1 of 11**

Questions? Problems? Call (800) 448-4131
and we will be happy to assist you. For technical
specification sheets or other information about our
products, please go to www.zumtobel.us



ZUMTOBEL

Installation Instructions – INDIVIDUAL & CONTINUOUS



Important Preinstallation Note: 4" square welded junction box (30 cu. in. volume) supplied by others. Canopies and suspensions are ordered separately. **Junction boxes should be installed regressed 3/16" into sheetrock ceiling.** For T-bar ceilings use caddy clips by others. Please refer to the approved layout drawings prior to installation, if applicable.

TECTON TRUNKING for TECTON SYSTEM

DO NOT REMOVE THE LED ASSEMBLY. THIS WILL VOID THE WARRANTY. Call Zumtobel at 1-800-448-4131 for questions.



DANGER

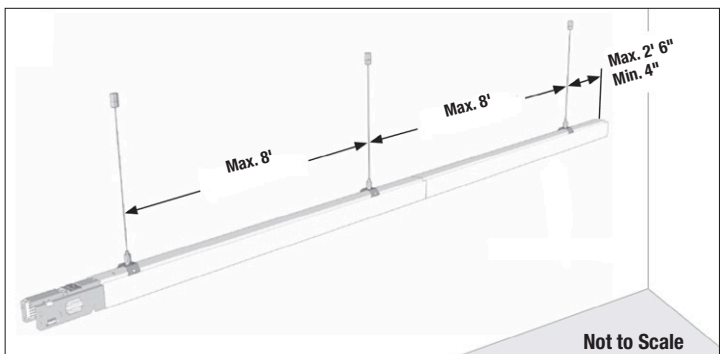
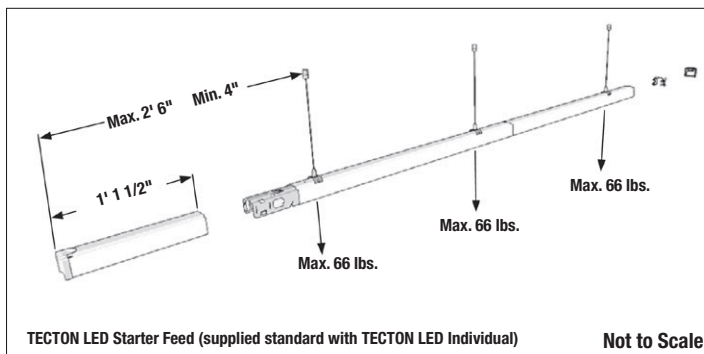


RISK OF FIRE AND ELECTRICAL SHOCK

Contact, improper installation, or improper servicing MAY RESULT IN DEATH OR SERIOUS INJURY!

Fixture must be installed by a qualified electrician only. Fixture is intended for installation in accordance with the National Electrical Code, local and federal code specifications. Disconnect power at electrical panel before servicing. Retain these instructions for maintenance reference.

Finished suspension length will be reduced by maximum of 2' 6" depending on location of first and last aircraft cable.

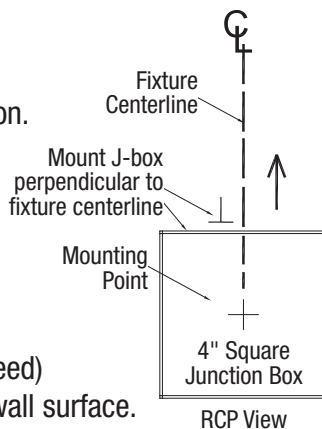


3 Prepare ceiling/wall for junction box and suspension installation using method(s) below that apply to your installation.

All mounting points must be in a straight line. J-boxes must be mounted perpendicular to fixture center line as shown.

a. Cable, Surface Mount –

Install junction box (feed or non-feed) 3/16" above the finished ceiling/wall surface. Trunking weight is approximately 1.2 lb/ft. (actual weight depends on optic used; please refer to individual optic spec sheets for details)



b. Cable Mount – Hang cable-mounted suspension.

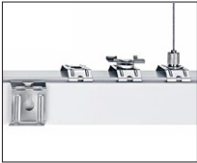
Screw cross bar bracket to junction box. Insert cable into keyhole in cross bar bracket.

c. Cable Mount – 1/4-20 mounting: Secure crossbar with stud at least 1/2" below ceiling tile.

Make sure all mounting points, junction boxes and canopies are in a straight line.

Standby battery pack fixtures need separate junction box(es) and suspensions.

Installation Instructions – INDIVIDUAL & CONTINUOUS



Important Preinstallation Note: 4" square welded junction box (30 cu. in. volume) supplied by others. Canopies and suspensions are ordered separately. **Junction boxes should be installed regressed 3/16" into sheetrock ceiling.** For T-bar ceilings use caddy clips by others. Please refer to the approved layout drawings prior to installation, if applicable.

TECTON TRUNKING for TECTON SYSTEM

DO NOT REMOVE THE LED ASSEMBLY. THIS WILL VOID THE WARRANTY. Call Zumtobel at 1-800-448-4131 for questions.



DANGER

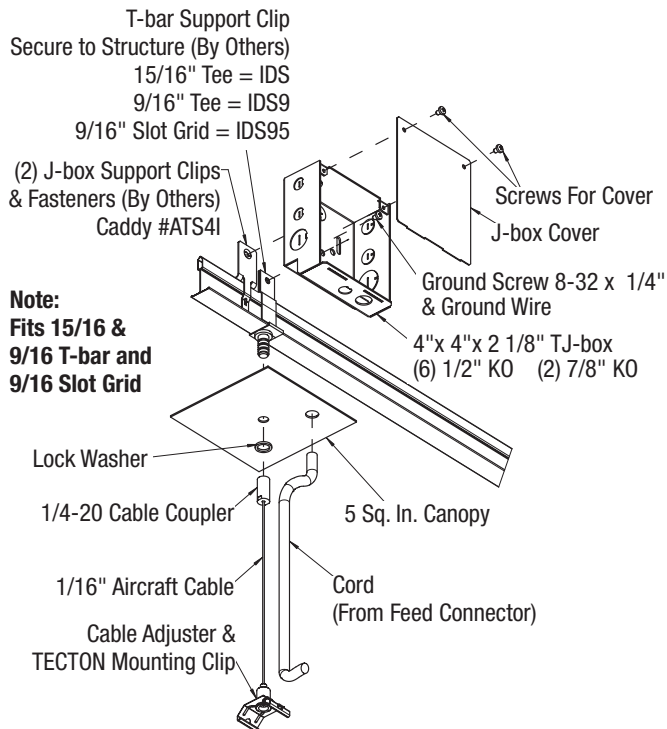
RISK OF FIRE AND ELECTRICAL SHOCK

Contact, improper installation, or improper servicing MAY RESULT IN DEATH OR SERIOUS INJURY!

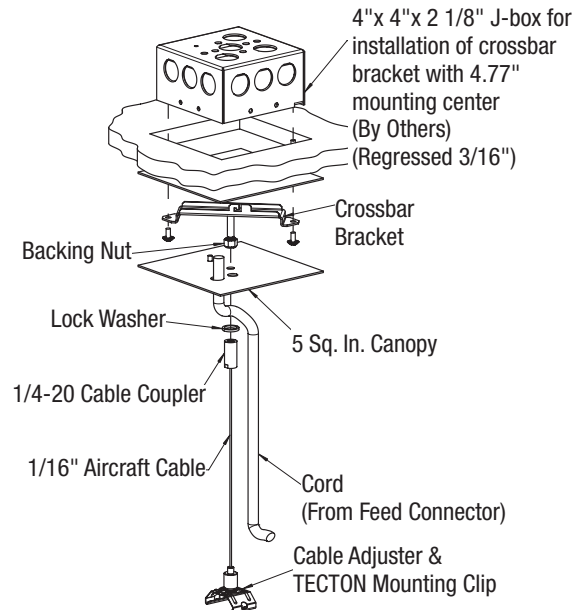
Fixture must be installed by a qualified electrician only. Fixture is intended for installation in accordance with the National Electrical Code, local and federal code specifications. Disconnect power at electrical panel before servicing. Retain these instructions for maintenance reference.



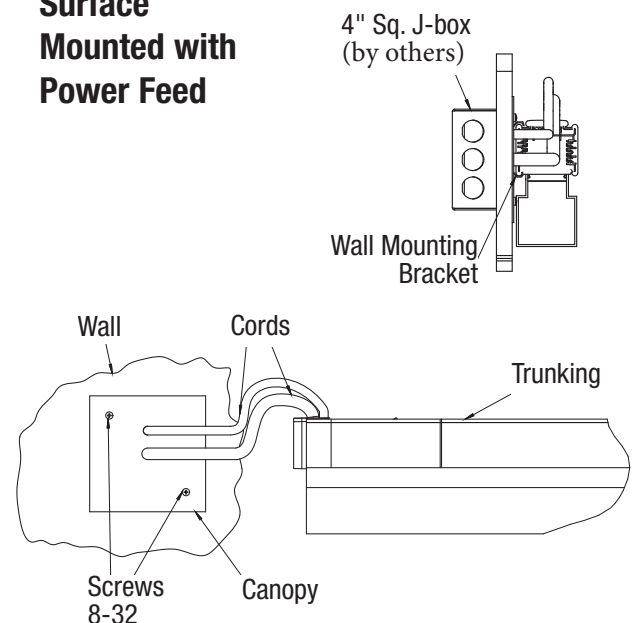
T-bar Mounted with Power Feed



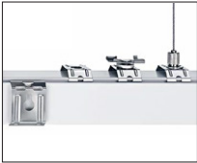
J-box Mounted with Power Feed



Surface Mounted with Power Feed



Installation Instructions – INDIVIDUAL & CONTINUOUS



Important Preinstallation Note: 4" square welded junction box (30 cu. in. volume) supplied by others. Canopies and suspensions are ordered separately. **Junction boxes should be installed regressed 3/16" into sheetrock ceiling.** For T-bar ceilings use caddy clips by others. Please refer to the approved layout drawings prior to installation, if applicable.

TECTON TRUNKING for TECTON SYSTEM

DO NOT REMOVE THE LED ASSEMBLY. THIS WILL VOID THE WARRANTY. Call Zumtobel at 1-800-448-4131 for questions.



DANGER

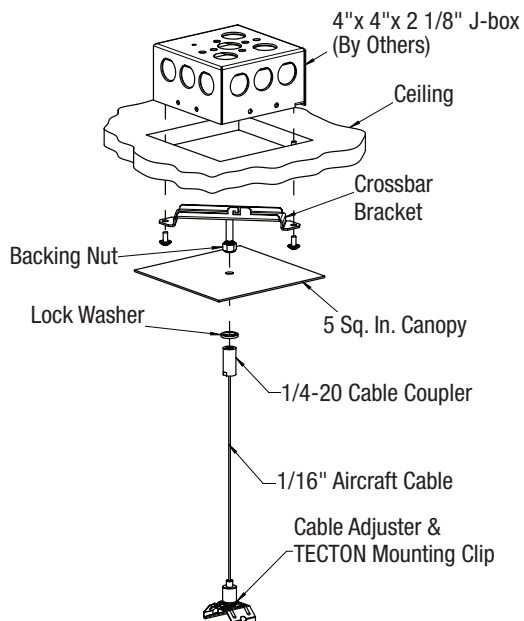


RISK OF FIRE AND ELECTRICAL SHOCK

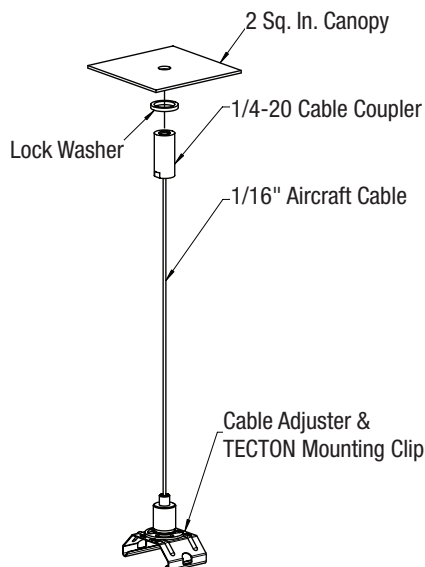
Contact, improper installation, or improper servicing MAY RESULT IN DEATH OR SERIOUS INJURY!

Fixture must be installed by a qualified electrician only. Fixture is intended for installation in accordance with the National Electrical Code, local and federal code specifications. Disconnect power at electrical panel before servicing. Retain these instructions for maintenance reference.

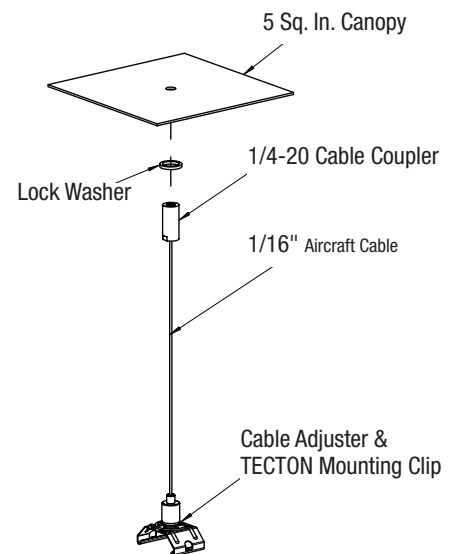
J-box Mounted Non-Power Feed – 5" Canopy



1/4-20 Fastener Non-Power Feed – 2" Canopy



1/4-20 Fastener Non-Power Feed – 5" Canopy



TECTON TRUNKING for TECTON SYSTEM

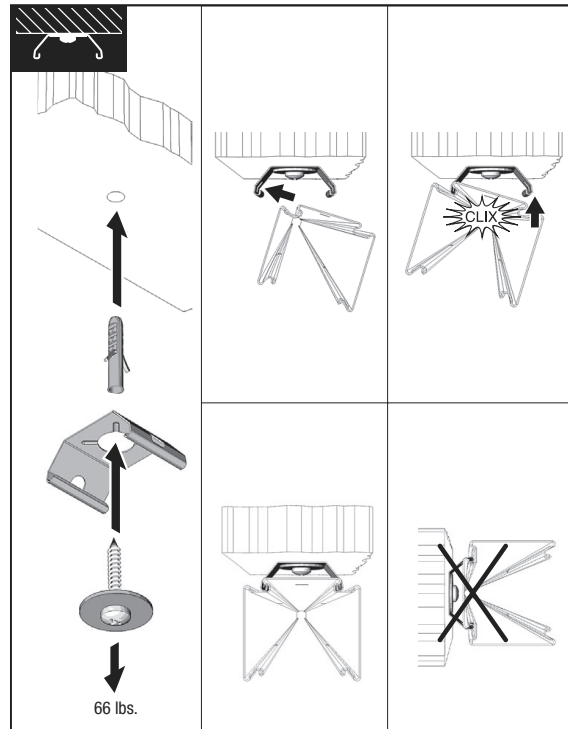
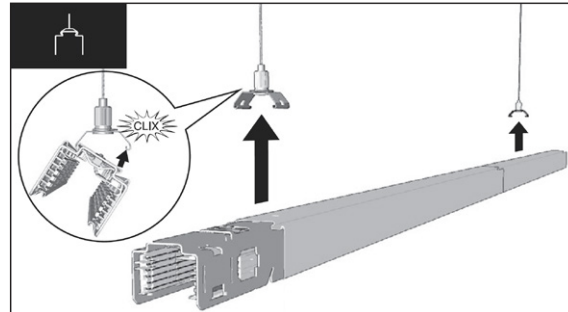
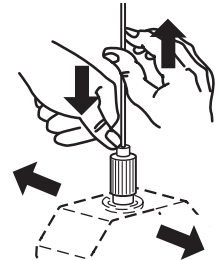
 **DANGER**



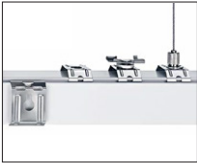
Contact, improper installation, or improper servicing
MAY RESULT IN DEATH OR SERIOUS INJURY!

a. Cable Mount – Snap brackets at the end of the cable to the top of the trunking. Adjust aircraft cable suspension length by pressing the spring-loaded connector and sliding cable to desired length. Position of cable bracket is adjustable along the length of the trunking.

4 Attach trunking to suspensions



Installation Instructions – INDIVIDUAL & CONTINUOUS



Important Preinstallation Note: 4" square welded junction box (30 cu. in. volume) supplied by others. Canopies and suspensions are ordered separately. **Junction boxes should be installed regressed 3/16" into sheetrock ceiling.** For T-bar ceilings use caddy clips by others. Please refer to the approved layout drawings prior to installation, if applicable.

TECTON TRUNKING for TECTON SYSTEM

DO NOT REMOVE THE LED ASSEMBLY. THIS WILL VOID THE WARRANTY. Call Zumtobel at 1-800-448-4131 for questions.



DANGER

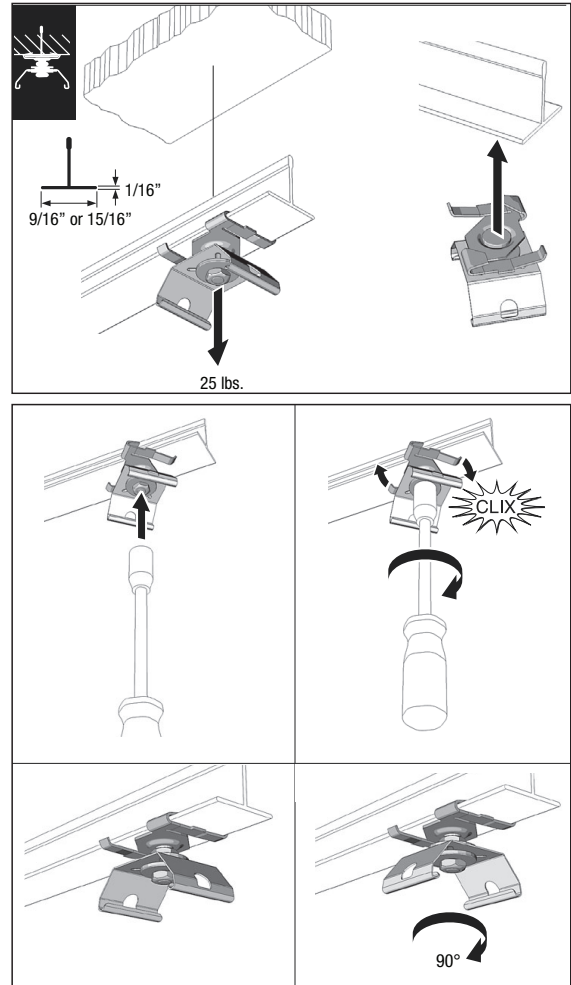


RISK OF FIRE AND ELECTRICAL SHOCK

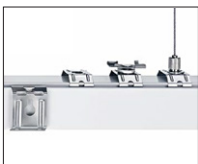
Contact, improper installation, or improper servicing
MAY RESULT IN DEATH OR SERIOUS INJURY!

Fixture must be installed by a qualified electrician only.
Fixture is intended for installation in accordance with
the National Electrical Code, local and federal code
specifications. Disconnect power at electrical panel
before servicing. Retain these instructions for
maintenance reference.

c. Surface Mount T-bar – Attach caddy clip to T-bar
and with nut driver (by others) twist caddy clip 90° to
securely lock in place.



Installation Instructions – INDIVIDUAL & CONTINUOUS



Important Preinstallation Note: 4" square welded junction box (30 cu. in. volume) supplied by others. Canopies and suspensions are ordered separately. **Junction boxes should be installed regressed 3/16" into sheetrock ceiling.** For T-bar ceilings use caddy clips by others. Please refer to the approved layout drawings prior to installation, if applicable.

TECTON TRUNKING for TECTON SYSTEM

DO NOT REMOVE THE LED ASSEMBLY. THIS WILL VOID THE WARRANTY. Call Zumtobel at 1-800-448-4131 for questions.



DANGER

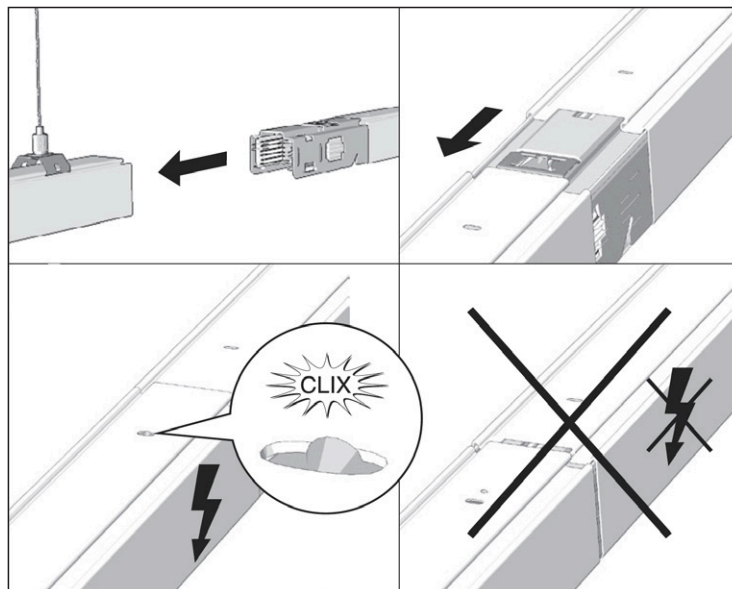


RISK OF FIRE AND ELECTRICAL SHOCK

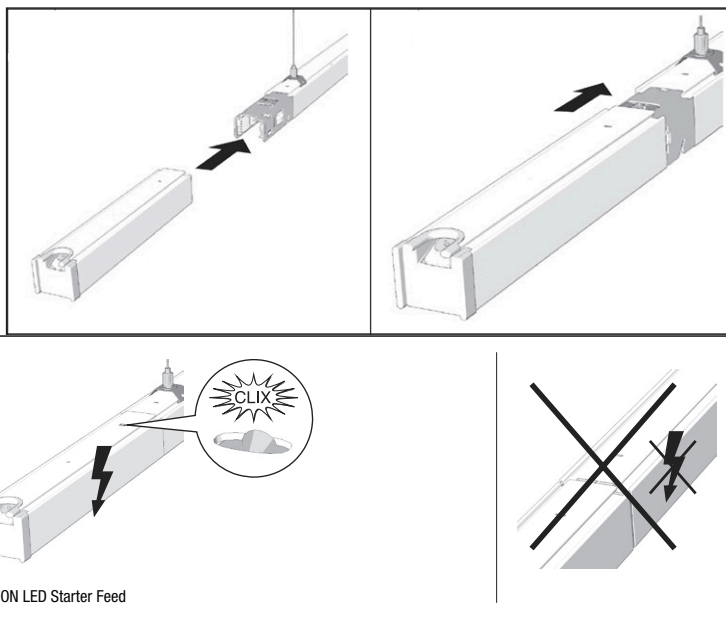
Contact, improper installation, or improper servicing MAY RESULT IN DEATH OR SERIOUS INJURY!

Fixture must be installed by a qualified electrician only. Fixture is intended for installation in accordance with the National Electrical Code, local and federal code specifications. Disconnect power at electrical panel before servicing. Retain these instructions for maintenance reference.

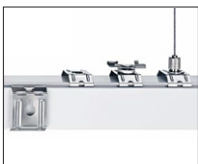
5 Attach trunking sections to each other for continuous runs by pressing firmly until the CLIX sound is heard. Make sure to orient the trunkings correctly as shown. Trunkings are shipped prewired for mechanical and electrical connection and grounding.



6 Attach Starter feed module to trunking unit by pushing firmly until CLIX sound is heard. Make electrical connections from supplied power cord to ceiling.



Installation Instructions – INDIVIDUAL & CONTINUOUS



Important Preinstallation Note: 4" square welded junction box (30 cu. in. volume) supplied by others. Canopies and suspensions are ordered separately. **Junction boxes should be installed regressed 3/16" into sheetrock ceiling.** For T-bar ceilings use caddy clips by others. Please refer to the approved layout drawings prior to installation, if applicable.

TECTON TRUNKING for TECTON SYSTEM

DO NOT REMOVE THE LED ASSEMBLY. THIS WILL VOID THE WARRANTY. Call Zumtobel at 1-800-448-4131 for questions.



DANGER



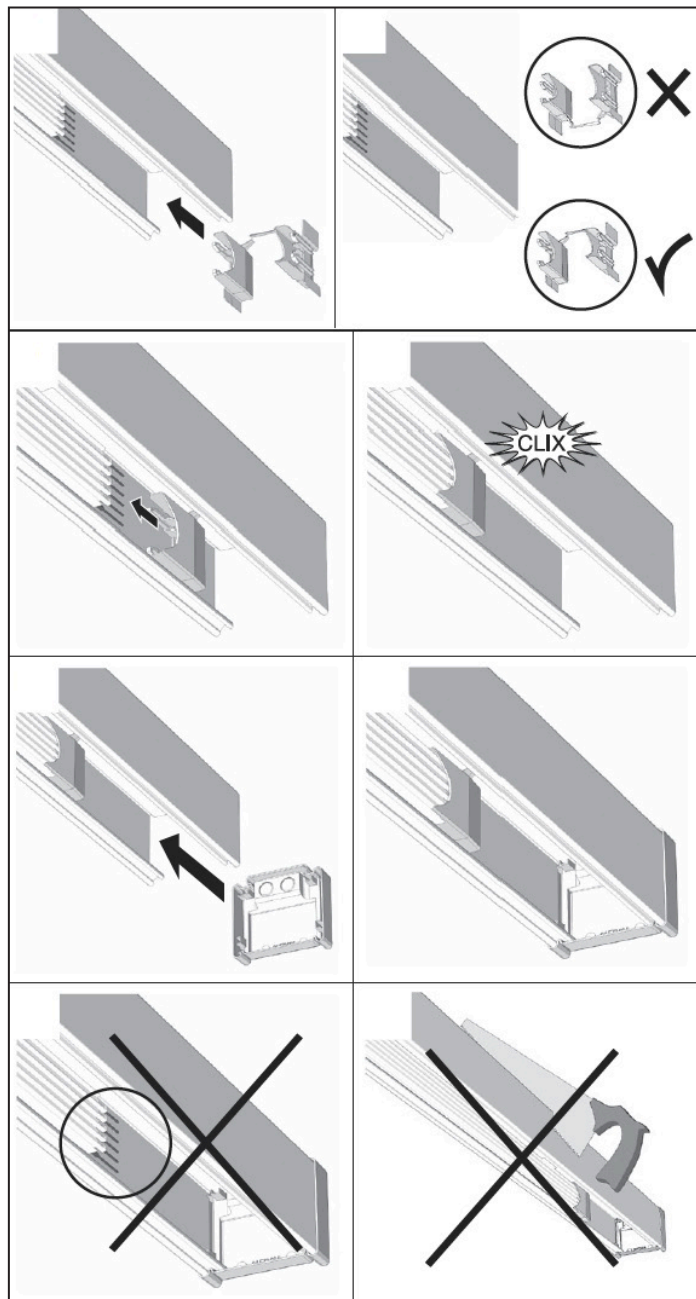
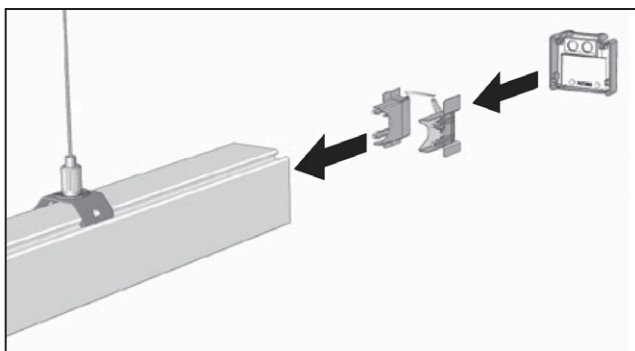
RISK OF FIRE AND ELECTRICAL SHOCK

Contact, improper installation, or improper servicing MAY RESULT IN DEATH OR SERIOUS INJURY!

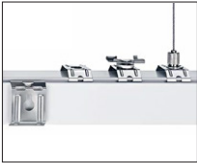
Fixture must be installed by a qualified electrician only. Fixture is intended for installation in accordance with the National Electrical Code, local and federal code specifications. Disconnect power at electrical panel before servicing. Retain these instructions for maintenance reference.

7 Complete the run. **THIS IS A VERY IMPORTANT STEP.**

a. End Cap – Terminate the wiring using supplied busbar terminator cover as shown below. Insert the cover through the open end of the trunking, making sure the orientation is correct. Push the cover in until you hear a click to indicate positive engagement. Finally complete the run by inserting supplied end cap.



Installation Instructions – INDIVIDUAL & CONTINUOUS



Important Preinstallation Note: 4" square welded junction box (30 cu. in. volume) supplied by others. Canopies and suspensions are ordered separately. **Junction boxes should be installed regressed 3/16" into sheetrock ceiling.** For T-bar ceilings use caddy clips by others. Please refer to the approved layout drawings prior to installation, if applicable.

TECTON TRUNKING for TECTON SYSTEM

DO NOT REMOVE THE LED ASSEMBLY. THIS WILL VOID THE WARRANTY. Call Zumtobel at 1-800-448-4131 for questions.



DANGER



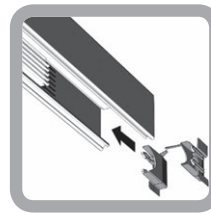
RISK OF FIRE AND ELECTRICAL SHOCK

Contact, improper installation, or improper servicing MAY RESULT IN DEATH OR SERIOUS INJURY!

Fixture must be installed by a qualified electrician only. Fixture is intended for installation in accordance with the National Electrical Code, local and federal code specifications. Disconnect power at electrical panel before servicing. Retain these instructions for maintenance reference.



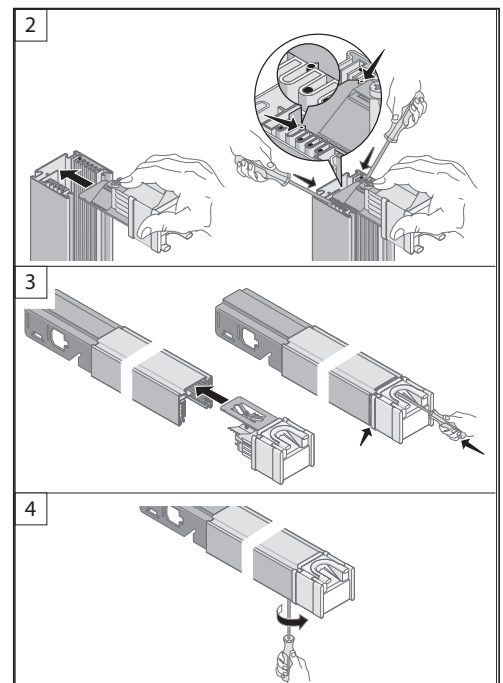
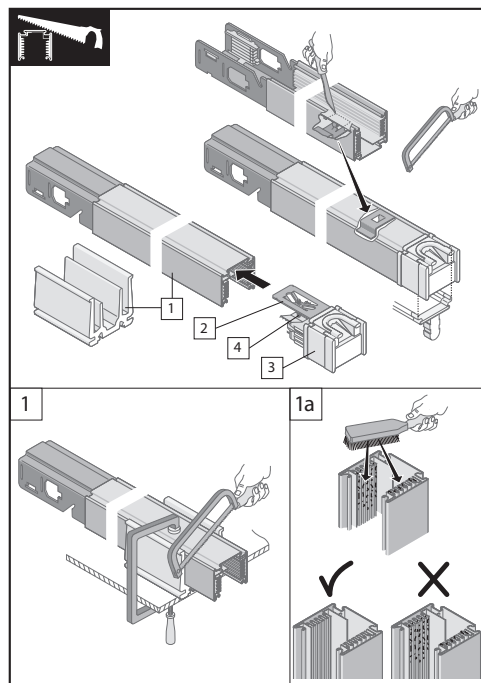
DANGER



REMOVE LABEL AFTER INSTALLATION

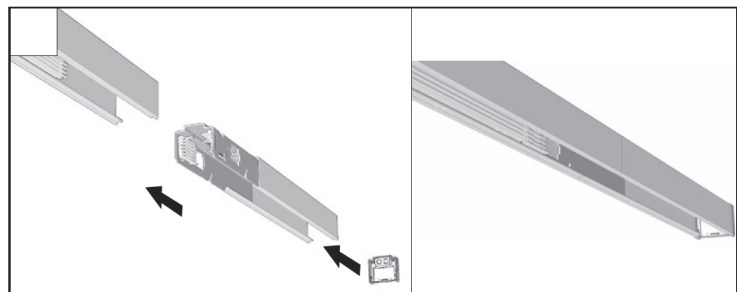
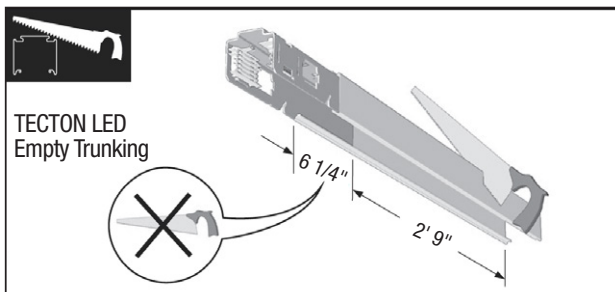
OR

b. Cut the trunking as desired using supplied cutting aid (ordered separately). Brush out the shavings and terminate the wiring using supplied end cap ordered separately.

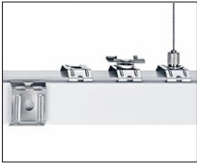


OR

c. End the run with an empty trunking by cutting it to desired length and completing with an end cap.



Installation Instructions – INDIVIDUAL & CONTINUOUS



Important Preinstallation Note: 4" square welded junction box (30 cu. in. volume) supplied by others. Canopies and suspensions are ordered separately. **Junction boxes should be installed regressed 3/16" into sheetrock ceiling.** For T-bar ceilings use caddy clips by others. Please refer to the approved layout drawings prior to installation, if applicable.

TECTON TRUNKING for TECTON SYSTEM

DO NOT REMOVE THE LED ASSEMBLY. THIS WILL VOID THE WARRANTY. Call Zumtobel at 1-800-448-4131 for questions.



DANGER

RISK OF FIRE AND ELECTRICAL SHOCK

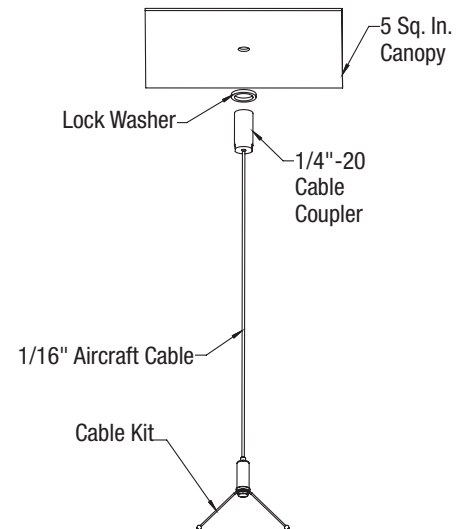
Contact, improper installation, or improper servicing MAY RESULT IN DEATH OR SERIOUS INJURY!

Fixture must be installed by a qualified electrician only. Fixture is intended for installation in accordance with the National Electrical Code, local and federal code specifications. Disconnect power at electrical panel before servicing. Retain these instructions for maintenance reference.

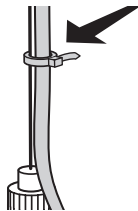


8 Make electrical connections using supplied power cord. Attach canopy ground wire to a suitable point in the junction box, per NEC and local codes.

9 Slide canopy to cover junction box. Repeat for all canopies.



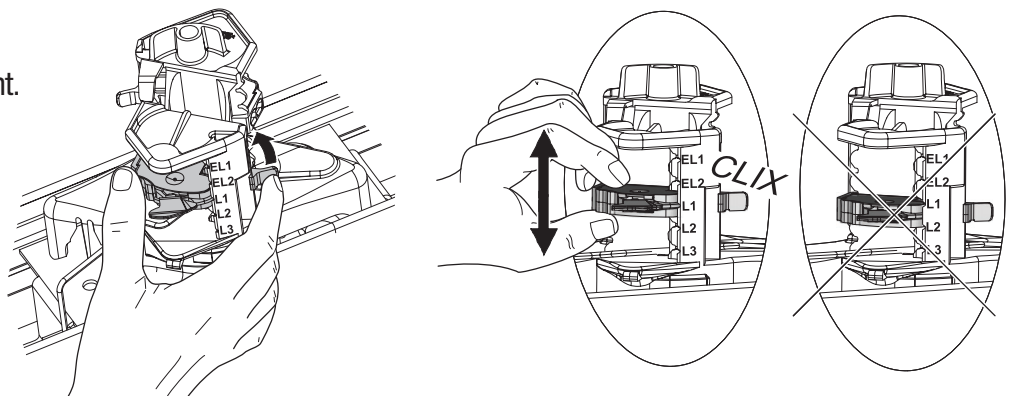
10 Secure power cord to aircraft cable with wire ties provided. Wire ties provide strain relief.



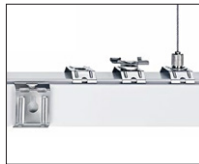
BELOW INSTRUCTIONS FOR FIELD CHANGE REQUIREMENTS ONLY. INDIVIDUAL FIXTURES ARE SUPPLIED ASSEMBLED.

11 Attach batten to installed trunking. Select switchable leg by choosing L1, L2 or L3. Press lever on movable contact to disengage as shown and slide it up or down to desired location. When the indicator lines up with L1, L2 or L3 and clicks into place, release to re-engage lever.

Note: Plan loading of 4A each circuit. (80% of maximum rating). Maximum 12A total for each feed point.



Installation Instructions – INDIVIDUAL & CONTINUOUS



Important Preinstallation Note: 4" square welded junction box (30 cu. in. volume) supplied by others. Canopies and suspensions are ordered separately. **Junction boxes should be installed regressed 3/16" into sheetrock ceiling. For T-bar ceilings use caddy clips by others.** Please refer to the approved layout drawings prior to installation, if applicable.

TECTON TRUNKING for TECTON SYSTEM

DO NOT REMOVE THE LED ASSEMBLY. THIS WILL VOID THE WARRANTY. Call Zumtobel at 1-800-448-4131 for questions



DANGER



RISK OF FIRE AND ELECTRICAL SHOCK

Contact, improper installation, or improper servicing
MAY RESULT IN DEATH OR SERIOUS INJURY!

Fixture must be installed by a qualified electrician only.
Fixture is intended for installation in accordance with
the National Electrical Code, local and federal code
specifications. Disconnect power at electrical panel
before servicing. Retain these instructions for
maintenance reference.

12. For corners, make electrical connections as described on page 7.

13. Mate the corners to the trunking
by pressing firmly until a clicking sound is heard.

