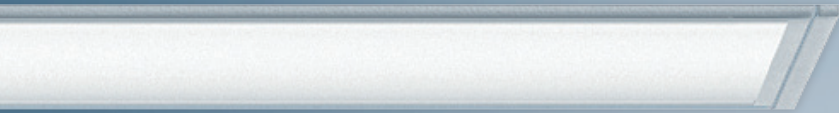




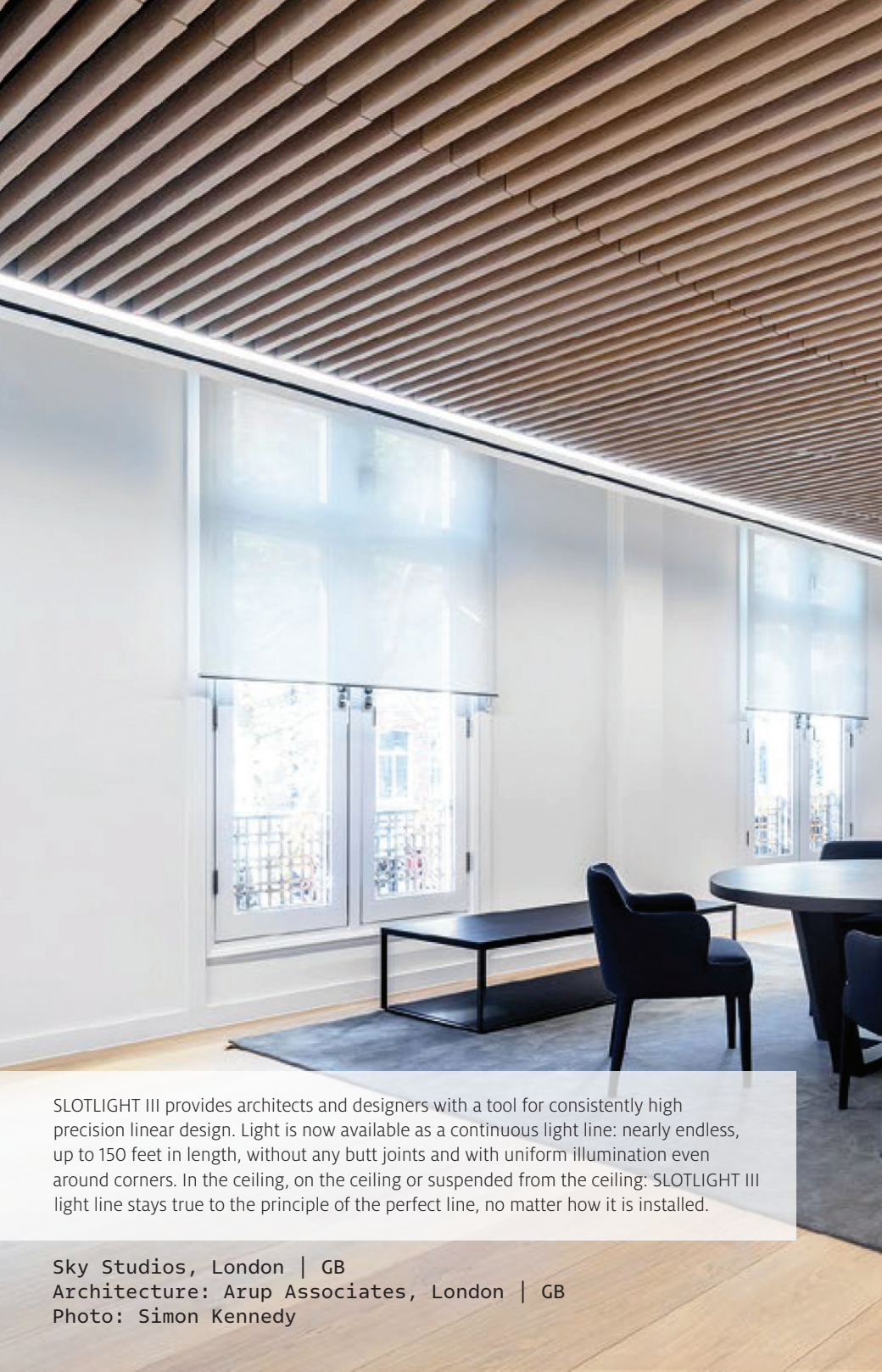
ZUMTOBEL



SLOTLIGHT III

RECESSED, SURFACE MOUNTED, WALL MOUNTED,
AND PENDANT LUMINAIRE

zumtobel.us/slotlight-led-iii



SLOTLIGHT III provides architects and designers with a tool for consistently high precision linear design. Light is now available as a continuous light line: nearly endless, up to 150 feet in length, without any butt joints and with uniform illumination even around corners. In the ceiling, on the ceiling or suspended from the ceiling: SLOTLIGHT III light line stays true to the principle of the perfect line, no matter how it is installed.

Sky Studios, London | GB

Architecture: Arup Associates, London | GB

Photo: Simon Kennedy



Minimalism

Offices

Lobbies

Conference Rooms

Libraries

Classrooms

DIRECT-INDIRECT DISTRIBUTION

SPOTLIGHT III PENDANT LUMINAIRE

SLOTLIGHT III with direct-indirect distribution delivers a luminous flux up to 1000 lm/ft as both a single luminaire and a geometrically formable light line. The lighting components can be switched and dimmed separately to help create the right light for a wide range of activities and applications. Uniformly bright ceilings can be achieved with a space of just 12" between luminaire and ceiling. Proven SLOTLIGHT III features like the endless optics and luminous corner connectors further enhance the creative freedom of the pendant luminaire, which is available in white, silver and black.



CONTINUOUS UNITS OF UP TO 150 FEET

INFINITE ROLL OPTIC FLUSH OPAL LENS

The optic of SLOTLIGHT III is supplied as a continuous diffuser roll – for easy installation of a continuous LED light line by one person only. The rolls are available in various lengths. They can easily be cut to length with a box cutter. The diffuser is made of unbreakable and flexible PC, black sealing rims protect the luminaire's interior against the accumulation of dust. The luminaire is protected against dirt by a blue protective film on the lens until completion of work.

The roll optic opal lens is also available with luminance reducing or asymmetric distributions. The recessed mounting version includes a regressed roll optic lens option.



Consistently precise light lines are modern architecture lighting tools. SLOTLIGHT III has the potential for virtually unlimited creativity. It is a functional lighting tool that can be elegantly integrated into your architectural dichotomy.

As a recessed, wall, pendant or surface mounted luminaire, SLOTLIGHT III achieves a completely new dimension of linearity: it is three dimensional, linear and yet dynamic. The individual and continuous pendant luminaires are suspended using Zumtobel's tried and tested aircraft cable suspension kits.

ROLL OPTIC OPAL



4' and Continuous

Widths

1.5", 2.5", 4"

Delivered Lumens

400, 500, 600, 700,
800, 900 lm/ft

Watts

5-12 W/ft

ROLL OPTIC LRO LENS



4' and Continuous

Widths

2.5", 4"

Delivered Lumens

400, 500, 600 lm/ft

Watts

5-9 W/ft

UGR

< 19

LOUVER



4' and Continuous

Widths

1.5", 2.5"

Delivered Lumens

400, 500, 600, 700,
800, 900 lm/ft

Watts

5-12 W/ft

UGR

< 19*

** with specific louver options*



DIRECT ASYMMETRIC
ROLL OPTIC LENS



4' and Continuous

Widths
1.5", 2.5", 4"

Delivered Lumens
400, 500, 600, 700,
800, 900 lm/ft

Watts
4-11 W/ft

INDIRECT ASYMMETRIC



4' and Continuous

Widths
1.5", 2.5", 4"

Delivered Lumens
400, 500, 600 lm/ft

Watts
6-12 W/ft

INDIRECT BATWING

4' and Continuous

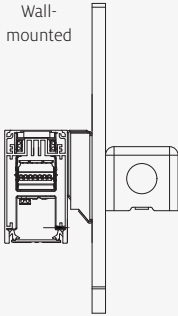
Widths
1.5", 2.5", 4"

Delivered Lumens
400, 500, 600, 700,
800, 900, 1000 lm/ft

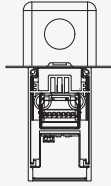
Watts
4-11 W/ft

MOUNTING OPTIONS

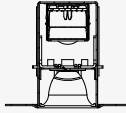
Wall-mounted



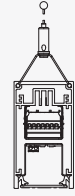
Ceiling surface-mounted



Recessed (Ceiling or Wall)



Pendant



Photometry*

LRO Direct |
Batwing Indirect



Pendant 2.5" x 4'

Direct / Indirect

Opal Roll Optic



Pendant 2.5" x 4'
90 CRI, 3500K

Direct

Matte Black Louver |
Batwing Indirect

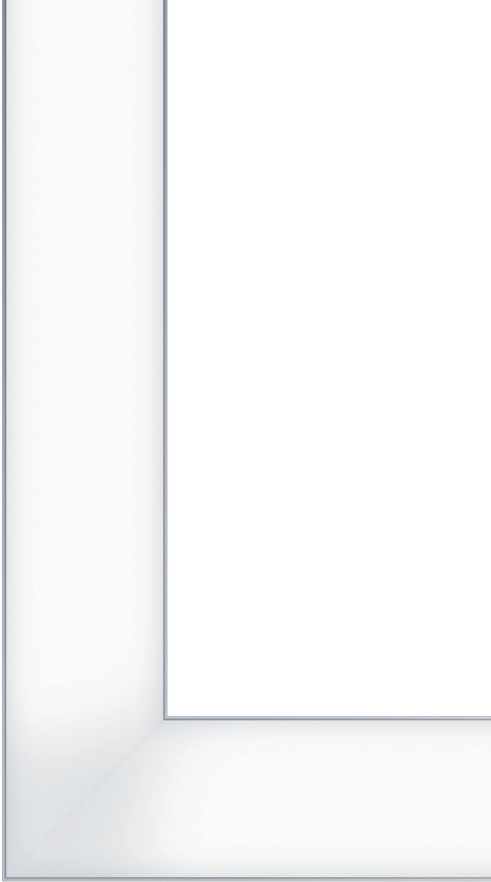


Pendant 2.5" x 4'
90 CRI, 3500K

Direct / Indirect

* Visit zumtobel.us/slotlight-led-iii/ for all photometry

SLOTLIGHT III knows how to take light round the corner, its illuminated corners opening up new scope for creative design. Room geometries can be articulated more effectively, room zones can be redefined, and corner areas can be brought into sharper focus using light. The 90° angle modules are not merely connectors; they blend in as an integral part of the luminaire, their consistent, virtually end-to-end illumination being just as perfect as the dead straight light lines.



Declare.

Zumtobel Lighting is participating in the Declare program with our entire SLOTLIGHT III family. This label allows us to disclose the ingredients we use in this family.
zumtobel.us/declare

Seamless Lines: The world's first continuous light line: up to 150' in length, completely without shadows, interruptions and gaps. The unique design guarantees perfect integration into plasterboard ceilings and ceiling modules.

Versatile Use: A range of different installation options, designs, optics and color temperatures makes for a universal lighting solution. With optimum glare suppression (UGR < 19, L65 < 3000 cd/m²), the LRO optic helps meet Well Building standards

Easy Planning: A versatile range of luminaire sizes, optics, outputs, finishes, controls, and mounting options offering design flexibility.

Multiple Finishes: Available in white, black, and silver.

T H E L I G H T

zumtobel.us/contacts

EN 06/2023 © Zumtobel Lighting Inc.
We reserve the right to make technical changes without notice.